

## Air Purification

- CO & Moisture Indicators Standard
- Non-Corrosive Filter Cartridges
- Manufactured By MAKO



### Features

- Visual CO and moisture indicators do not require depressurization
- System inoperable without cartridge in chamber when cartridge monitor option is used
- Non-corrosive replaceable cartridge
- No adhesive odors or tastes because adhesive is not used in the manufacturing process
- Stainless steel springs incorporated in cartridge assures properly packed filter media
- Anodized aluminum alloy chambers rated for 6000 psig with a 4 to 1 safety factor

### Purification Cartridge Capabilities

MAKO Purification Part No.	Rating at 80°F Inlet Cubic Ft.	Capability at 70°F Inlet Cubic Ft.
MK1C	9,800	13,000
MK2C	24,000	31,500
MK4C	43,000	56,500
MK5C	57,400	75,500
MK8C	83,000	109,000
MK10C	120,000	157,500
MK420C	300,000	394,000

## CO Monitor

The carbon monoxide (CO) monitor prevents contamination of the air supply by shutting down the compressor when the CO level is too high. The cartridge monitor will do the same when the moisture level is too high. These monitors are available for electric, gasoline, or diesel driven compressors. They may also be ordered as retrofit kits to be installed on existing compressor systems.

### Features

- Automatically shuts down compressor when CO level is too high
- May be used on any brand compressor system
- Tamper resistant by use of keystroke sequence
- Automatically alerts user when recalibration is required
- Self prompting instructions allows user to recalibrate quickly

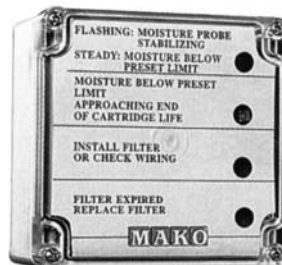
### Part No. MKCOM Specifications

Detection Range	0-50PPM
Response Time	60 seconds
Operating Temperature	5° to 131° F
Display Type	LCD (adjustable)
Keypad	4 sealed keys
Automatic Signaling	1 - 90 days, selectable
Overall Dimensions	4.7 x 4.8 x 2.4 inches



## Cartridge Monitor

The MAKO cartridge monitor has its sensor located inside the chamber, not the disposable cartridge. There is no need for the added expense of purchasing a cartridge with an installed sensor.



Part No. MKCMS

### Indicators

- Early Warning
- Red Shutdown
- Forgot to Install Cartridge

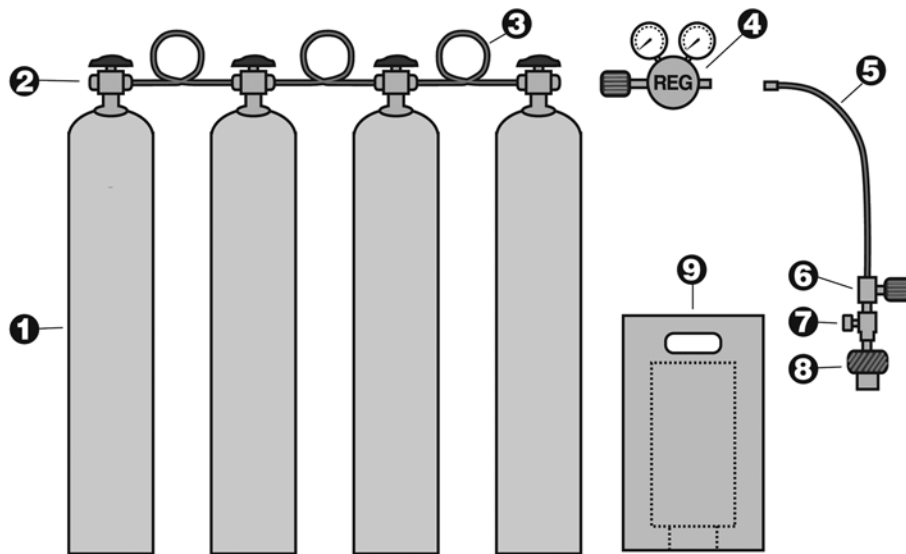
## 4500 psi DOT Air Cascade System

Air cascade system can include two or more DOT cylinders, with stationary or mobile mounts.

Air cascading simply means equalizing the pressure between the cylinder refilled and the next lowest supply cylinder. If this doesn't get the desired pressure in the small cylinder, the supply cylinder is turned off and the next highest supply cylinder is opened and the pressure allowed to equalize between the two cylinders.



This is a typical cascade system with an adjustable pressure regulator and wall mounting brackets



### Four Cylinder Cascade System to Fill 4500, 3000 or 2216 psi SCBA Cylinders, System Includes:

1	Four (4) No. AC40050, 475 cu ft. 5000 psi cylinders with CGA347 valves
2	Three (3) No. AC20023-1 tee, one (1) No. 20022 tee, two (2) No. 20013 adapter
3	Three (3) No. AC80052, 24" flex pigtails
4	One (1) No. AC60010 regulator assembly, 6000/5000 psi
5, 6, 7 & 8	One (1) No. AC10026 fill hose assembly, 5 ft. with gauge, on/off valve and universal hand tight nut and nipple
9	One (1) No. AC70020 single cylinder aluminum fragmentation deflector container (Note: Also available, No. AC70030 two cylinder fragmentation deflector container)
10	Four (4) No. AC70080 wall mounting cylinder brackets (Not Shown)

## No. TAC-1500-GALV

### Standard Features:

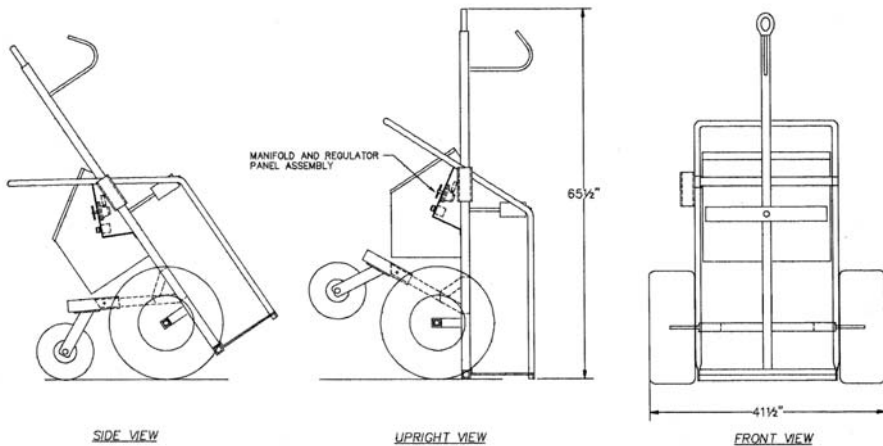
- Low pressure three outlet manifold with 3 Foster brass quick connects
- Heavy gauge galvanized steel storage box with locking handle
- Two cylinder cascade assembly with inline check valves
- Lifting eye and heavy duty cylinder clamp
- Heavy duty galvanized steel construction
- High flow two stage brass regulator
- Removable pneumatic third wheel
- Heavy duty green Herculite cover
- Low pressure alarm bell
- 22" pneumatic tires
- Standard unit equipped with one cylinder clamp

### Optional Equipment:

- Custom tow bar for your vehicle or cart
- Hansen or Schrader quick connects
- Stainless steel hardware for H<sub>2</sub>S environments
- Special paint requirements
- Live Hose Reels



Manufactured by:  
Dooley Tackaberry



The Air Source 1 (AS1) Single is ideal for confined space entry. The AS1 Single is available in 2216, 3000, 4500 and 5000 psi configurations. When combined with Type C respirators with escape, it provides unmatched IDLH (Immediately Dangerous to Life and Health) protection. With Airline equipped SCBA, the AS1 Single becomes a crucial extra cylinder of air.

Unlike other single cylinder air supply units, the AS1 Single doubles as a rescue unit, because of its dual cylinder capacity. Cylinders can be replaced on the go, without interrupting the air supply to the worker.

The AS1 Single consists of a universal pressure reducer, coupled with 2, 3 or 4 airline connections. For maximum adaptability, the connections are available in Hansen, Foster or Schrader. The frame includes adjustable straps that will fit any air supply cylinder.

As part of the AS1 System, the AS1 Single is upgradeable to meet your changing needs. This is perhaps its most important feature in a world of ever-changing requirements, standards, and government regulations.



*The Air Source 1 Single is a single cylinder air supply system with dual cylinder versatility.*

## Ordering Information

*Each AS1 manifold comes with two open/close "Quick Connect Sockets." Up to two additional "Quick Connect Sockets" may be added.*

### Air Source One Single

Part No.	Description
<b>2216 psi</b>	
701.203.00L22	w/Foster Fittings
701.204.00L22	w/Hansen Fittings
701.205.00L22	w/Schrader Fittings
<b>4500 psi</b>	
701.203.00H45	w/Foster Fittings
701.204.00H45	w/Hansen Fittings
701.205.00H45	w/Schrader Fittings

## Benefits:

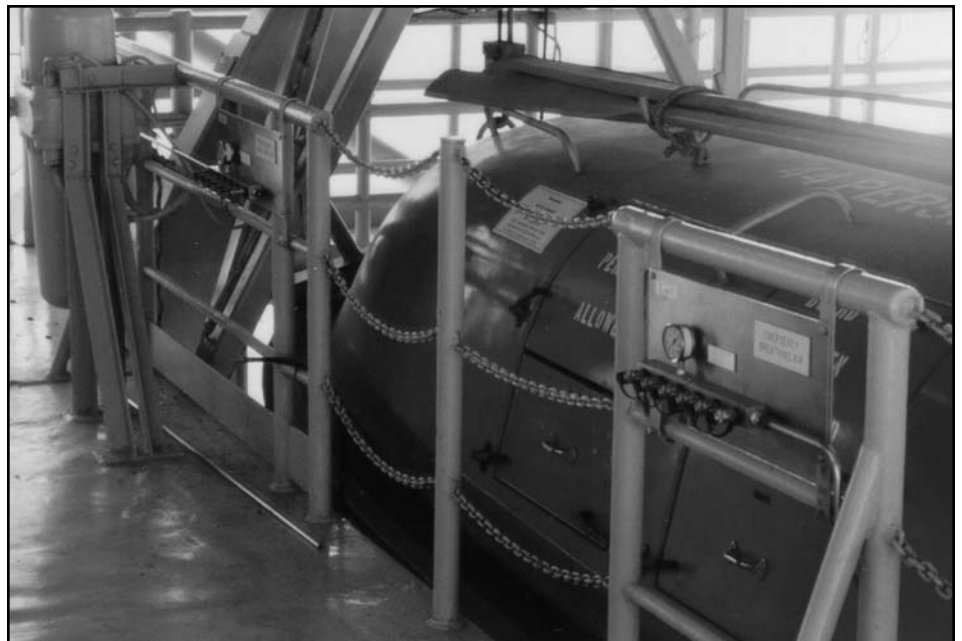
- Second cylinder can be connected to manifold to extend air supply duration.
- Air cylinders can be refilled through the manifold without being removed from carrier.
- Any size cylinder from any manufacturer can be attached to the AS1 Single.
- Simple design makes standard service and repair easy for end-user.
- The AS1 Single system is simple: air leaves the cylinder and is reduced by the single-stage reducing valve which has only two moving parts.
- Cylinders may be changed without interrupting air flow.

**8-Cylinder Breathing Air Cascade Rack With Regulator Panel**

Manufactured by:  
Dooley Tackaberry



**Breathing Air Manifolds at Lifeboat Muster Station**



- Meets OSHA Requirements for Compressed Air
- Continuous Monitoring of Breathing Air
- CO and Organic Vapor Detection
- Simple Calibration and Maintenance
- Multiple Filter Panel Options

Designed to meet OSHA requirements for monitoring Grade D respirable air from oil lubricated compressors this versatile instrument, with years of proven performance, can be used for a wide range of applications. Equipped with a MOS Broad Range sensor, the monitor not only responds and alarms to excessive carbon monoxide which enters the airline system, but also to hydrocarbon contamination and other oxidizable toxic gases. A durable corrosion resistant and tamper proof case, rugged electronics, automatic purge, stable calibration and continuous sample flow indication, are all combined to insure trouble free operation. The ABL-50 is available in two models, the 1540 or 1541 (with built in horn). Both may be purchased with or without an airline filter system.

The Dynamation Air Breathing Line of instruments satisfy the requirements of OSHA rule 29 CFM 910.134(d)(2)(ii) for carbon monoxide monitoring. They will also monitor Grade E air which is generally specified for breathing air in cylinders (SCBA).

#### Gases

Carbon Monoxide and Hydrocarbons

#### Ranges

CO (0)2 to 50 ppm

#### Expected Sensor Life

3 to 5 years

#### Display

Analog Meter

#### Adjustable Alarm Point

CO 10 ppm

#### Dimensions

6.5 x 10.75 x 5 inches (W x H x D)

#### Alarms

Visual – Large red LED  
Audible – Case mounted horn (Model 1541)

Relay – Dry contact

#### Airline Input

1/8" feed – standard pressure 70-150 psi

#### Sample Flow Rate

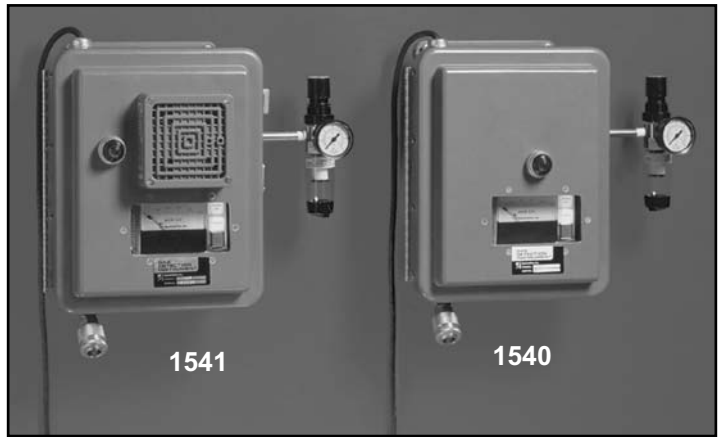
0.5 cubic feet of air per hour (scfh)

#### Power Source

110V AC or 12V DC

#### Temperature Range

32°F to 105°F (0°C to 40°C)



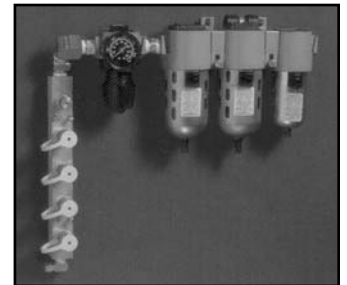
ABL-50 Series

### Wall Mounted Filter Panel Option

**822 (25 CFM), 852 (50 CFM) and 8114 (100 CFM)**

The 25, 50 or 100 CFM panels filter out dangerous toxins from supplied air sources and ensure clean, breathable air. The three-stage filter system efficiently removes particulates, oil vapors, and hydrocarbons from an air supply. After filtration the regulator sets the pressure for the respiratory equipment and the manifold assembly provides multiple outlets for airline hose quick connections. The model 822 includes two user female quick connections and the 852 and 8114 provide four female quick connection outlets. The 25 and 50 CFM panels may be ordered separately from the manifold and regulator for remote mounting.

A 1/2" FPT connection is standard for all models.



852

#### Ordering Information

Part No.	Description
<b>Air Line Monitors</b>	
1540	Without case mounted horn
1541	With case mounted horn
<b>Air Line Filter Panels</b>	
822	Wall mounted 25 CFM
822-R	Wall mounted 25 CFM, remote option
852	Wall mounted 50 CFM
852-R	Wall mounted 50 CFM, remote option
8114	Wall mounted 100 CFM
9114	Carry-Air portable 100 CFM
<b>Accessories</b>	
7701-002	Calibration kit
7802-001	Test gas – 20 ppm CO
7802-006	Test gas – zero gas
5501-001	Replacement sensor – carbon monoxide (CO)

**CALL**

**800.833.0247  
281.479.9700**

**FAX**

**800.282.4365  
281.479.6321**

**CALL US TODAY**

# ALLEGRO® AXIAL BLOWER SYSTEM

With the highest output available from a 8" axial blower, this compact unit offers light weight and high output from an AC electric motor (3A/115V). It is designed with tough steel construction, a durable grill, convenient carrying handle and rubber feet. With the use of 15 ft. or 25 ft. ducting canister it becomes an all-in-one ventilation system. The design allows the tubing to collapse into a built-in canister for easy storage. The unit can be also stored vertically to use a minimum amount of space.



RESPIRATORY EQUIPMENT

## Air Flow (cfm)

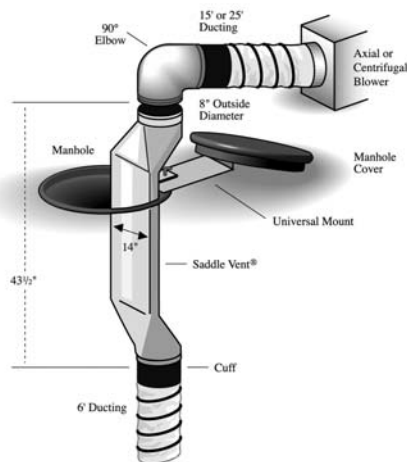
Free Air	w/One 90 deg. bend	W/Two 90 deg. bends
1150	595	530

## Ordering Information

Part No.	Description	Weight
9514-15	Blower with canister and 15 ft of ducting	32 lbs.
9514-25	Blower with canister and 25 ft of ducting	46 lbs.

## Saddle Vent®

The Saddle Vent® is a simple device that allows ventilation but keeps ducting outside the confined space opening. Eliminates working around bulky ducting when entering or exiting manholes or tanks. Models for each application are made of rugged polyethylene and are designed for quick and easy installation.



## Ordering Information

Part No.	Description
9510	Manhole style
9511	Tank style
9510-90	90 deg. swivel elbow allows tubing to adapt to Saddle Vent® with minimal air flow restriction
9510-01	Universal mount. Works with manhole cover to hold a Saddle Vent® in place. Rugged metal construction includes a hook to hold the Saddle Vent®.

*SADDLE VENT® is a registered trademark of Air Systems International, Inc.; the SADDLE VENT® device is protected by U.S. Patent No. 4,794,956,4,982,653, and foreign patents.*



**Elbow  
9510-90**



**Universal  
Mount 9510-01**

Allegro Venturi Blowers are a perfect solution to moving air anywhere fumes that may be poisonous, explosive or hazardous from process towers, tanks, large pipes or confined spaces. You can also cool workers in elevated temperature conditions, or cool heavy equipment that may be in danger of overheating or that needs to be cooled in order to work on with a direct blast of directed air.

A 1/2" hose with a "crows foot" connection is recommended from the air supply source to the side inlet connection. The compressor size required can be determined by checking the chart on air consumed at various inlet pressures. Operate Venture Blowers on air or steam lines limited to 140 psi.

### Features:

- Lightweight construction
- Convenient carry handles for one-person portability to any location
- No guards required
- Multiple inlet ports
- Sturdy steel galvanized steel diffuser
- All models include a crow's foot inlet connection
- Static ground is attached to the base of all blowers
- Single piece cast aluminum inlet housing



RESPIRATORY EQUIPMENT

Air Flow:			
Part No.	Inlet Pressure		
	40 PSIG	60 PSIG	80 PSIG
	<b>AIR CONSUMED:</b>		
9518-03S	36 SCFM	50 SCFM	62 SCFM
9518-03	36 SCFM	50 SCFM	62 SCFM
9518-06	73 SCFM	98 SCFM	124 SCFM
9518-08	114 SCFM	152 SCFM	193 SCFM
	<b>TOTAL AIR FLOW:</b>		
9518-03S	815 CFM	981 CFM	1182 CFM
9518-03	1017 CFM	1231 CFM	1482 CFM
9518-06	2385 CFM	2885 CFM	3347 CFM
9518-08	3152 CFM	4152 CFM	4929 CFM

### Example:

**When using 9518-03S with air supply 40 PSIG and 36 SCFM, the total outlet air flow will generate up to 815 CFM.**

Specifications:							
Part No.	Overall Length	Diameter of Base	Diameter of Horn	NPT Size	Bolt Circle Diameter	Basic Slot Diameter	Net Weight
9518-03S	16.75"	7.31"	6.0"	1/2"	6.56"	0.4	5.5 lb
9518-03	30.5"	7.31"	7.0"	1/2"	6.56"	0.4	8.5 lb
9518-06	44.25"	11.25"	12.5"	1"	10.50"	0.4	22.3 lb
9518-08	46.06"	14.37"	14.25"	1"	13.62"	0.4	36.0 lb

Saving every precious second possible, ZICO® WALKAWAY® brackets assure instant access to vital breathing apparatus. Installed on walls, fire trucks or other stable surfaces, these dependable brackets securely hold breathing apparatus in the “ready” position. You quickly strap on apparatus unassisted for an immediate getaway. No bending, no straining, no struggling with equipment.

A WALKAWAY® bracket is composed of a backplate, two spring clips and a footplate. Model CRS (Collision Restraint Strap), Model PHS (Positive Holding Strap), or Model TDS (Tie Down Strap) may be specified with the bracket or added at a later date.



No. SC-50-H-5-SF

## Recommended Walkaway® Brackets - For Scott® Cylinders

### Ordering Information

Part No.	Cylinder Part Number and Description
UH-6-30-2-SF	No. 804101-01 2216 psi 30 min. aluminum
SC-50-H-6-SF	No. 804840-01 2216 psi 30 min. carbon
SC-50-H-5-SF	No. 804721-01 4500 psi 30 min. carbon
SC-50-H-6-SF	No. 804722-01 4500 psi 45 min. carbon
UH-7-60-2-SF	No. 804723-01 4500 psi 60 min. carbon



No. SC-50-H-6-SF

**NOTE:** Above brackets will work with steel, aluminum, and hoop and full-wrap composite Fiberglass, Kevlar®, and carbon air cylinders. Call us for a copy of a complete listing of SCBA manufacturers and the recommended WALKAWAY® bracket to be used. A universal Cabinet Mounting Bracket (Model CMB) may be used with any SCBA when mounted in a wall cabinet.

## Quic-Pac® Covers

Protect breathing apparatus from dust and tampering. Each cover has a built-in pocket for mask storage. Cover material is vinyl. Heavy duty brass zipper or Velcro closure. Quic-Pac® assembly consists of a WALKAWAY® bracket (see above), a No. 1010-320-000 masonite backboard, and a cover (listed to right). Each component must be ordered separately.



### Ordering Information

Model No.	Part No.	Description
2VN-RZ	1015-105-000	Vinyl Cover/Zipper - Red
2VN-RV	1015-110-000	Vinyl Cover/Velcro - Red
2VN-YZ	1015-115-000	Vinyl Cover/Zipper - Yellow
2VN-YV	1015-120-000	Vinyl Cover/Velcro - Yellow

# THOMAS FIBERGLASS BREATHING APPARATUS CABINETS

## Features Include:

- A Patented Seal
- Positive Seal Trim Lock Bulb Gasket
- Comes Complete with Universal SCBA Brackets
- One Size Fits All Major Brands of SCBA
- Epoxy-coated Brackets Hold Cylinders Securely Without Damaging Cylinder Walls
- Solid Brass Grab Handles
- Easy view Acrylic window provides verification of contents
- Full Length Stainless Steel Hinges, Rivets and Dual Quick Opening Latches
- Custom Self Adhesive Classification Emblems
- Choice of UV-Inhibited High Visibility Colors
- Mounts Easily on any Flat Surface
- Model SEC-15 Also Available with Window



**APB-35**



**APB-36D**



**SEC-15**



**ABA-35**



**EERS-30**

SPECIFICATIONS							
Part No.	Outside Dimensions			Inside Dimensions			Shipping Weight
	Height	Width	Depth	Height	Width	Depth	
APB-35	35	18-3/4	11-1/2	32-1/4	16-1/2	10-3/4	32
APB-36D	37-1/4	37-1/4	12	34-3/4	34-3/4	11-1/4	73
SEC-15	16-1/4	16-1/4	10-1/4	14-3/4	14-3/4	9	12
EERS-30	30-3/4	14-3/4	11-1/4	28-1/2	12-1/4	10-1/2	25
ABA-35	35	18-3/4	11-1/2	32-1/4	16-1/2	10-3/4	29

Standard Color is Yellow

RESPIRATORY EQUIPMENT