

High Temperature Fiberglass Cloth

Woven, non-flammable asbestos-free fiberglass fabric suitable for use as a curtain for splash protection in welding and cutting. This fabric meets or exceeds to 1000 Deg. F, weight 18 oz./yd. This fabric meets or exceeds the following specifications:



- C-20079G, Type 1, Class 3.7.9, 1-24244
- USCG 164.009
- U.L. #1214 - Flame Propagation
- U.L. #91 - Vertical Burn Test
- U.L. #723 - Surface Burning

Standard size and custom size blankets are available with hemmed edges and brass grommets.

Ordering Information

Part No.	Description
2025/9383	Fiberglass cloth, 60" x 50 yd. Roll
2025-6X6	Fiberglass blanket, with grommets, size 6ft. x 6ft.
2025-6X8	Fiberglass blanket, with grommets, size 6ft. x 8 ft.
2025-12X12	Fiberglass blanket, with grommets, size 12 ft. x 12ft.

Duct Tape

Firmly adheres to a variety of clean surfaces. Ideal for taping gloves and boots to protective garments.

Ordering Information

Part No.	Description
168S	7.5 mil, color silver, 2" x 60 yds. per roll

Rags

Absorbent cotton cleaning rags. Indispensable for many clean-up jobs.

Ordering Information

Part No.	Description
R-50-C	Colored, medium weight, 50 lbs. per box

Poly Sheeting

Clear polyethylene sheeting for use as vapor dust and particle barriers.

Ordering Information

Part No.	Description
PF-20x100-6	Transparent Polyethylene Sheeting, 20ft. wide x 100 ft. long per roll, Ind 4.5 Mil Thickness

MSA Tool Holders

Keeps hands out of impact area. 6" model is high impact plastic, holds tools up to 1-1/4" diameter. Two man model is 18" fluted aluminum and holds tools up to 2-3/4" diameter.



Ordering Information

Part No.	Description
10040018	Tool Holder, 6" length
507005	Tool Holder, 18" length

Allsafe/SMC BarGard®

Small plastic rebar caps still comply under OSHA standards in all states besides California, and there is no ban on the general use of small caps as recommended by manufacturers. American Allsafe/SMA® caps as protection against cuts and abrasions in common workplace accidents.

BarGards are bright orange in color for easy visibility and protection. Made from heavy-duty polyethylene, they're just the thing to keep heavy equipment clear of foundation stud bolts and to protect threaded bars, bolts and pipe-ends.

Ordering Information

Part No.	Model No.	Fits Rebar Size	Standard Package
23707	PC-110	3/8" to 1" Dia.	50
23704	A-5	3/8" to 3/4" Dia.	200
23700	A-10	3/8" to 1-1/4" Dia.	100
23702	A-20	1" to 2-1/4" Dia.	100



Respirator Carry Bags

Carry bags are belt mounted for carrying respirators, gloves, goggles, and small tools. Bags are constructed of denier nylon or lightweight nylon reinforced vinyl fabric with Velcro® closure to protect, equipment from dust, scratches and moisture.



Ordering Information

Part No. Description

Mouthbite Respirator Bags

- | | |
|----------|---|
| 101DB-WB | Bag, denier nylon, 5" x 4" x 5", color tan, with 1" belt |
| 201RB | Bag, vinyl / nylon, 5" x 4" x 5", color yellow, with belt loop and snap |

Half Mask Respirator Bags

- | | |
|---------|---|
| 102DT | Bag, denier nylon, 6-1/2" x 4" x 5", color tan, with 1-1/2" belt |
| 230BL | Bag, vinyl / nylon, 7" x 4" x 9", color yellow, with two belt loops and 1" belt |
| 8285-DD | Bag, vinyl / nylon, 8" x 4-1/2" x 4-1/2", color yellow, with two belt loops |

Full Mask Respirator Bags

- | | |
|-----|--|
| 204 | Bag, vinyl / nylon, 8" x 6" x 12", color yellow, with two belt loops |
|-----|--|

Respirator Bag Belt

- | | |
|----------|-------------------|
| 6819-151 | 1-1/2" nylon belt |
|----------|-------------------|



Goggle Retaining Clip

Convenient way to store goggles on rear of safety cap or hat. Heat formed plastic clip slips on rear of headgear securely holding a goggle in place. Completely dielectric.

Ordering Information

- | Part No. | Description |
|-----------|-------------------------|
| KYM-KYWC1 | Cap style, color white |
| KYM-KYOH | Hat style, color orange |

Glove Guard® Clip

- Keeps your gloves close by
- Improves hand safety
- Completely dielectric
- Fits safety and PPE programs
- Attaches to belt loop, coveralls, back supports



Ordering Information

- | Part No. | Description |
|----------|--|
| 1939 | Glove guard® clip, color blue (BL), also available in yellow (YL), red (RD), green (GRN), or black (BLK) |

Warning Tapes and Stripes

A quick, easy and inexpensive way to mark aisles and physical hazards. The highly visible, 6-mil pressure-sensitive vinyl tale is self-wound with a permanent adhesive, and is protected with an abrasion resistant clear laminate that resists oil, dirt and chemicals.

Colors conform to OSHA 1910.144 for marking requirements:

Black/Yellow (BY): Physical hazards

Black/White (BW): Housekeeping and aisle marking

Blue/White (WB): Defective equipment marking

Orange/White (OW): Traffic and caution warning

Red/White (RW): Fire protection equipment

Magenta/Yellow (MY): Radiation hazards

Green/White (GW): Safety and first aid

Alternating Stripes

Ordering Information

Part No.	Description (Specify Color)
HT200-	2" x 18 yds.
HT202-	3" x 18 yds.
HT204-	4" x 18 yds.
HT206-	2" x 36 yds.
HT208-	3" x 36 yds.
HT210-	4" x 36 yds.

Barricade Tape



Prevent accidents by increasing visibility of hazards with non-adhesive, 4-mil barricade tape. Tapes are light-weight, economical,

reusable polythelene, with a continuous repeat message or warning. Standard roll size is 3" x 1000 ft.

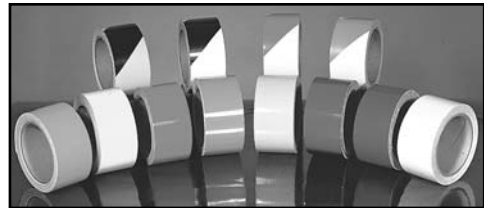
Ordering Information

Part No.	Legend	Color
BT-5	Caution Caution Caution	BK/YL
BT-7	Caution Construction Area	BK/YL
BT-8	Caution Do No Enter	BK/YL
BT-13	Caution Keep Out	BK/YL
BT-14	Caution Men Working	BK/YL
BT-31	Alternating-Stripes	BK & YL
BT-31	Alternating-Stripes	BK & RD
BT-49	Danger Danger Danger	BK/RD
BT-50	Danger Do No Enter	BK/RD
BT-55	Danger Keep Out	BK/RD

Call us for other available standard or special legends.



Colors Available - Left Alternating Stripes	
BY - Black/Yellow	GW - Green/White
RW - Red/White	WB - White/Blue
BW - Black/White	OW - Orange/White
MY - Magenta/Yellow	MYSY - Magenta/Yellow w/Radiation Symbol



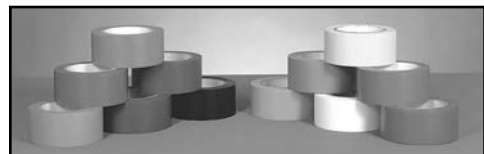
Colors Available - Solids	Colors Available - Stripes	
OR - Orange	YL - Yellow	BY - Black/Yellow
RD - Red	BK - Black	RW - Red/White
GN - Green	BL - Blue	BW - Black/White
		OW - Orange/White

Vinyl Pipe Banding Tape

Highly visible, tough, pressure-sensitive 5-mil vinyl tapes are perfect for color coding pipes. Available in 12 colors.

Ordering Information

Part No.	Description (Specify Color)
SP704-1-	1" x 36 yds.
SP704-2-	2" x 36 yds.
SP704-4-	4" x 36 yds.
SP704-6-	6" x 36 yds.



Colors Available		
RD - Red	BR - Brown	DB - Dark Blue
DG - Dark Green	BK - Black	LB - Light Blue
LN - Light Green	YL - Yellow	WT - White
GY - Grey	OR - Orange	PU - Purple



The 41" posts provide sturdy support for barricading chain. Two-color striped posts have alternating 4" wide color bands and are available in reflective or non-reflective. Use reflective posts for added visibility at night or in low light areas to warn of potential hazards.

Warning Chain & Posts

Ordering Information

Chain

Part No. Description

- 78234 Yellow chain, 1/2" x 100 ft.
- 78238 Yellow chain, 2" x 100 ft.
- 78254 Alternating black / yellow chain, 2" x 100 ft.

Connecting Links - 36/pkg

- 78244 Yellow links, 1-1/2" size
- 78246 Yellow links, 2" size

Posts - Bases & Tops Included - 6/box

- 92119 Solid black posts
- 92121 Solid yellow posts
- 92123 Striped black & yellow posts
- 92125 Reflective striped black & yellow posts

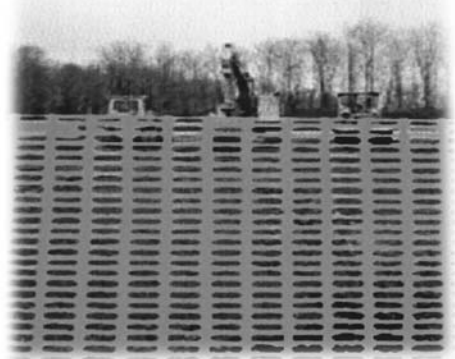
Safety Fencing

Ideal for day and night use and anywhere high visibility is a priority. Constructed of orange 14 lb. polypropylene material with 2-1/2" wide x 4" long rectangle openings with smooth edge at top.

Ordering Information

Part No. Description

- FNC-4100 Fencing, color orange, 4 ft. x 100 ft. per roll



Fred Silver/Bell Convex Acrylic Mirrors

Provides wide angle vision of areas that require frequent monitoring including blind corners, entrances and production areas. Acrylic mirrors weigh less than glass and are unbreakable under normal use. Comes with mounting brackets and instructions.

Ordering Information

Indoor Type

Acrylic Convex Indoor Type with Adjustable Brackets Plastic Frame & Mounting Hardware, Heavy Fiberboard Backing. *Aluminum Frame

Part No.	Size	Distance Covered
PLX-13	13" dia.	up to 12'
PLX-18	18" dia.	up to 17'
PLX-26	26" dia.	up to 24'
PLX-30	30" dia.	up to 28'
PLX-36	36" dia.	up to 35'
PLX-48*	48" dia.	up to 44'

Outdoor Type

Acrylic Convex Outdoor Type with Adjustable Bracket, Heavy Rubber Frame & Mounting Hardware, Tempered Painted Fiberboard Backing. * Aluminum Frame

PLXR-13	13" dia.	up to 12'
PLXR-18	18" dia.	up to 17'
PLXR-26	26" dia.	up to 24'
PLXR-30	30" dia.	up to 28'
PLXR-36	36" dia.	up to 35'
PLXR-48*	48" dia.	up to 44'

CALL
800.833.0247
281.479.9700

FAX
800.282.4365
281.479.6321

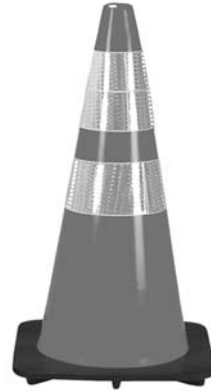
CALL US TODAY

Allsafe/SMC

HI-VIZ Fluorescent red/orange color with white interliner and black base. Designed to stack with most all other "wide body" cones. The full skirt design resists blowing over. Available in 18" and 28".

Ordering Information

Part No.	Description
0100109	18" cone
2202535	18" cone with 6" reflective collar
0100355	28" cone
2084349	28" cone with 4" & 6" reflective collar



MCR/River City Safety Vests

Polyester mesh with velcro tab closure and elastic side straps. No. CHEV/20 vest is classified as a ANSI/ISEA 1 07-1999 Class II vest.

Ordering Information

Part No.	Description
V201	Orange, one size, 18" x 47"
V211R	Orange, one size, 18" x 47", with 3/4" reflective lime stripes on front and black
CHEV20	Orange, one size, 19" x 54", with 360 deg. of reflective protection and 3 chevron designs on back and velcro closure



V201



V211R

Standard Vinyl Warning Flag

Fluorescent red/orange vinyl blend material with 3/4" dia. Hardwood staff (not shown)

Ordering Information

Part No.	Description
GF-18-24	18" x 18" flag with 24" staff



CHEV20

Allsafe/SMC Safety Flares

Powerful source of long distance illumination to show and warn traffic. Visible in fog, rain or snow storm. Fuses provide ample light for making emergency repairs on the road, while safely protecting the motorist by warning all approaching traffic of potential danger. Approved by Underwriters Labs.

Ordering Information

Part No.	Description
0117944	Safety flare, 20 minute, non-spike, 72 per case
0117956	Safety flare, 20 minute, with spike, 72 per case
0117279	Safety flare, 30 minute, non-spike, 36 per case
0117267	Safety flare, 30 minute, with spike, 36 per case



MILSHEFF SPRAY-STOPS™ VALVE/FLANGE SAFETY COVERS

Economical Control of Leaks and Sprays in Chemical Pipelines

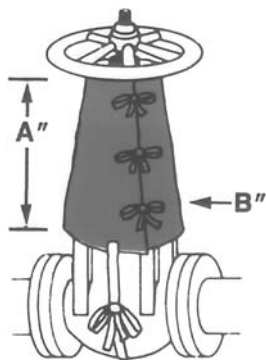
All Spray-Stops are made of a tough woven fabric coated with chemical-resistant vinyl (or Teflon®). They replace old-fashioned made-on-the-job covers at a fraction of the cost, are attached or removed in seconds, and are sun, rain, and fume-proof. Lightweight and compact, they fold flat for easy storage. Standard sizes available to fit the vast majority of valves and ASA flanges in use today, thus simplifying plant inventories. Any needed size can be supplied.

Spray-Stop Valve and Flange Covers deflect leakage at joints (a mist or a stream) so that it drips harmlessly to the floor instead of spraying adjacent areas or injuring personnel.

Two materials: Vinyl - for installations where temperatures do not exceed 220 deg. F and Teflon - for pipelines carrying fluids with up to 500 deg. F temperatures.

Indicating Spray-Stops. Even a mist or single drop of acid or caustic will bleach the inside orange coating (an outside spray will not affect it). Visible from a distance, the color change facilitates inspection and, in effect, makes every employee valuable during start-ups and inaccessible locations because, if a leak is discovered while still a "weep", it can probably be cured by a simple tightening of the bolts with minimum downtime, damage and cost. Protection continues indefinitely after the color change warning.

Teflon® Spray-Stops (non-indicating)



A — Height from top of Bonnet to below Bonnet Flange.

B — Circumference of Bonnet Flange.

eg: A=30" B=40"

Part number would be 30V40

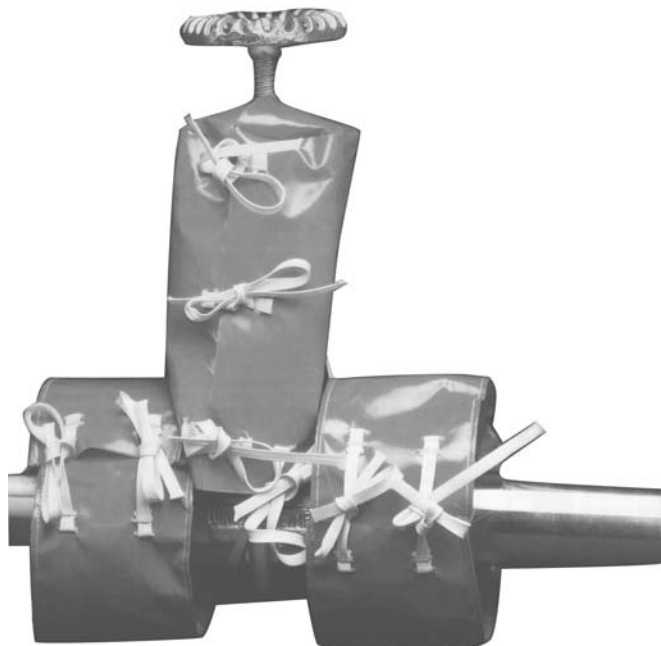
A.S.A. Pipe Size	Type 1 Flange Covers		Type 2 Flange Covers	
	150-Pound Part No.	300-Pound Part No.	150-Pound Part No.	300-Pound Part No.
1/2"	F0751	F11	F0752	F12
3/4"	F0751	F11	F0752	F12
1"	F11	F151	F12	F152
1-1/2"	F151	F21	F152	F22
2"	F21	F213	F22	F223
3"	F31	F313	F32	F323
4"	F41	F413	F42	F423
6"	F61	F613	F62	F623
8"	F81	F813	F82	F823
10"	F101	F1013	F102	F1023
12"	F121	F1213	F122	F1223
14"	F141	F1413	F142	F1423
16"	F161	F1613	F162	F1623
18"	F181	F1813	F182	F1823
20"	F201	F2013	F202	F2023
24"	F241	F2413	F242	F2423
30"	F301	F3013	F302	F3023
36"	F361	F3613	F362	F3623

FLANGE COVER TYPE 1

For Welded Flanges

FLANGE COVER TYPE 2

For Screwed Flanges



To Order

Flange Covers: Specify ASA pipe size, type of flange - type 1 or type 2, indicating or non-indicating, vinyl or teflon

Valve Covers: Provide two dimensions A & B as shown on the illustration

Explosion Proof Power Alarm®

The single sound channel EXPLOSION PROOF POWER ALARM® is a solid state audible device with a device with a hard wired single channel programmable sound module that generates 8 different rotary switch selectable sounds plus 4 additional sounds that can be selected remotely by customer switch. Remote feature requires RJ45-6 remote control cable. See chart below for details. UL Listed for Class I, Groups C & D. Gasketed for outdoor application.

Features Include:

- 117 db at 4 ft., 109 at 10 ft.
- 120 X 60 degree sound dispersion
- Weatherproof construction, fiberglass horn and cast aluminum housing
- -55 to +85 degree C temperature range
- NEMA 4 Marine rating

14" wide x 6" tall x 17-1/2" long, 24 lbs.

Ordering Information

Part No.	Voltage	Amps
1002WEP-120	120 VAC	0.2
1002WEP-240	240 VAC	0.1
1002WEP-24	24 VDC	0.8

Accessories

Part No.	Description
1001-WEP	EP speaker w/o circuitry
RJ45-6	Remove control cable
1002-WEP-24	24 VDC

RJ45-6 Remote Control Cable Selections

Remote Control	Operation	Priority
Red Wire	Yelp-Rapid Siren	1
Black Wire	Two-Tone - Alternating	2
Orange Wire	Horn - Steady	3
Gray Wire	Wail - Conventional Siren	4

Note: Priority 1 is the highest priority. The Yelp will override Two-Tone, Horn and Wail. Two-Tone will override Horn and Wail. Horn will override Wail.



Audio Electronic Megaphones



S-245 Safe Hailer

16 Watts Output
UL Listed No. 808X

Underwriters Laboratory approved for Class I, Group D, Division 2, marine and land based hazardous locations. Handheld pistol-grip trigger operation with volume control. Solid state amplifier with less than 1% distortion. Worldwide use by oil, chemical and maritime companies, all industries and authorities with hazardous areas.

Range: 1200 Yards/1098 Meters

Color: Safety Yellow

Power Source: Twelve "C" size Alkaline Batteries

Batteries not included.

Falcon Safety Shower Alarm

Designed expressly for floor mounted and horizontal supply emergency showers. Comes with a chain connection that hooks onto the shower pull, instantly setting off a piercing alarm blast when the victim activates the safety shower. Alerts other workers to chemical injuries, burns, etc. Activates automatically as safety drench shower is pulled. Powerful blast of Super Sonic™ Horn (120dB at 10') carries over normal industrial noise. Self-powered with no wires or batteries required. Installs in minutes.



Part No.	Description
----------	-------------

SSA1N	Alarm for Vertical Mounted Showers
SSA2N	Alarm for Horizontal and Floor Mounted Showers
SSNR	8 oz. Super Sonic™ Horn Refill

**All Falcon Signal Horns are
100% Ozone-Safe and Non-Flammable.**

Falcon Mighty Sonic™

Pushbutton Signal Horn

Quality built for long lasting reliability — totally independent of any other power source Mighty Sonic™ delivers a Piercing 120dB blast at 10', with convenient, push-button operation. Lightweight, high impact plastic trumpet is guaranteed unbreakable. Replaceable long lasting refills deliver hundreds of two second blasts.



Part No.	Description
----------	-------------

MSN	Push-button Signal Horn
MSNR	8 oz. Refill

Falcon Sound 911® Horn

A touch of the thumb, and the Sound 911® will scream out with a blast of 112dB at 10'. It comes with its own clip to attach on a belt or bag. No wires or batteries needed. If a worker is injured or needs attention the Sound 911® will blast the signal instantly. Each 1.5 ounce replaceable canister will deliver up to 100 two second piercing blasts. Recommended for emergency signaling in plants and offices.



Part No.	Description
----------	-------------

911	Sound 911® Horn
9112R	Sound 911® 1.5 oz Refills 2/Box

Falcon Emergency Alarm Station

Highly Visible Safety Yellow Wall Box

The Emergency Alarm Station is the perfect system for low cost protection — independent of any additional power source. The piercing scream of the Super Sonic™ Horn can be heard over ordinary industrial noise to alert workers to: fires, accidents, first aid calls, or building evacuations. Tamper proof, 20-gauge safety yellow steel wall box comes complete with a Super Sonic™ Horn, padlock and keys. The emergency handle assures immediate access, while the shrill blast of the horn will summon aid at the touch of a finger. Eight ounce replacement canisters are readily available to keep the Emergency Alarm always on the job ... no wiring or batteries needed.



Part No.	Description
----------	-------------

TAD4N	Emergency Alarm Station
TAB	Emergency Alarm Station (Box Only)
SSNR	8 oz. Super Sonic™ Horn Refill
TAR	Emergency Alarm Station Replacement Rods



"A" Single Steel Chock with Flag
"A-1" Single Steel Chock with Flag



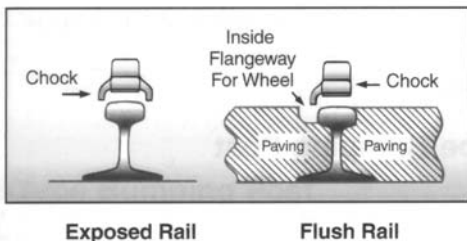
"C" Double Steel Chock with Flag
"C-1" Double Steel Chock with Flag



"D" Single Steel Chock
"D-1" Single Steel Chock



"B" Double Steel Chock
"B-1" Double Steel Chock



Exposed Rail

Flush Rail

OSHA Regulations Require:

That car brakes are applied and a wheel chock is placed before a car can be safely worked on.

Set the car brake first and then install the wheel chock. A chock alone will not hold the car. Use two chocks per car.

Single Steel Chock With Flag

No. 4011-01 "A" Exposed Rail

No. 4011-02 "A-1" Flush Rail

Double Steel Chock With Flag

No. 4011-06 "C" Exposed Rail

No. 4011-07 "C-1" Flush Rail

Single Steel Chock

No. 4011-09 "D" Exposed Rail

No. 4011-10 "D-1" Flush Rail

Double Steel Chock

No. 4011-03 "B" Exposed Rail

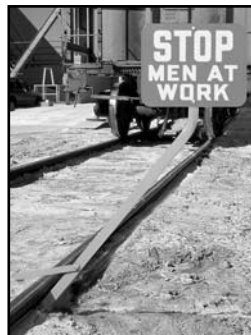
No. 4011-04 "B-1" Flush Rail

Double Steel Chock with Tightener (not shown)

No. 4011-05 "B-2" Exposed Rail

No. 4011-08 "C-2" Exposed Rail, with Flag

Portable Sign Holder



Ordering Information

Part No.	Description
4015-01	Steel holder, clamps to rail head, sign not included
6SMAW-B	Sign, STOP Men At Work, Blue on White
6SCAW-B	Sign, STOP Crew At Work, Blue on White
6SCC-B	Sign, STOP Car Connected, Blue on White

Note: Signs are 12" x 15", .080" aluminum, with reflective lettering

Before ordering, find out what kind of rail you have.

When You're Working Around Railroad Cars, You Can't Be Too Safe

ZICO Quick-Choc® Folding Wheel Chock

NFPA compliant choc requires less storage space! This new Folding Aluminum Wheel Chock, model SAC-44, requires only 6" H x 10-1/2" W x 20-3/8" D area for storage.

Convenient carrying handling makes transport and placement of chock a snap.

The folding chock has been designed and third-party tested to comply with SAEJ348 and the current NFPA 1901-96 Standard. May be used with tires up to 44 inches in diameter. Chock features high tensile strength aluminum construction, large rear opening hand grip and a double row of rugged teeth to grip almost any surface.



Ordering Information

Part No.	Description	Wt. (lbs)
SAC-44	Folding chock for up to 44" tire diameter	19.9
SQCH-44	Folding chock holder - horizontal	4.7

Checkers® Wheel Chocks

Wheel chocks, specifically designed for use on fire equipment, comply with NFPA 1901-1904 and meet SAE-J348 standard for up to 44" wheel diameters. These tough, damage resistant poly/urethane chocks are resistant to oils, fuels, and solvents, and feature high strength aluminum base plates with posi-grip traction cleats of aluminum or rubber. For added safety and convenience each chock incorporates a molded carrying handle.

Ordering Information

Part No.	Description
AT2514-AC-Y	Chock with aluminum cleat, color yellow
AT2514-AC-R	Chock with aluminum cleat, color red
AT2514-RP-Y	Chock with rubber cleat, color yellow
AT2514-RP-R	Chock with rubber cleat, color red

Mounting Brackets

AT2514VM	Vertical bracket
AT2514HM	Horizontal bracket



NFPA standards require wheel chocks to be mounted on fire apparatus before being placed into service. Two Chocks must be mounted and readily accessible per NFPA 1901 (Section 7-2), 1902 (Section 7-2), and 1903 (Section 6-1). Four Chocks are required per NFPA 1904 (Section 6-2). 1991 Edition.



Socks

Windssocks are manufactured long-life polyester fabric that is treated to resist the effects of wind and weather. All seams are double stitched with polyester thread for strength.

The windsock throat is reinforced and has solid brass grommets for easy attachment and corrosion resistance. A fastening cord is included with each windsock. Windssocks are high-visibility orange.

Ordering Information

Part No.	Description
WS-18	Windssock, 18"
WS-28	Windssock, 28"



Frames

These very popular frames are constructed of welded steel for strength and durability. They have two ball bearings for easy swiveling and are painted for corrosion resistance. The frame is mounted to a 1-inch diameter support pipe threaded to fit a 3/4" size pipe or conduit.

ORDER SOCKS SEPARATELY

Ordering Information

Part No.	Description
WS-F-18	18" diameter frame
WS-F-28	28" diameter frame

Gastec Air Flow Indicator Kit

The Air Flow Indicator Kit (smoke tube kit) is designed for easy visual determination of the directional pattern of air currents. The kit is useful in tracing air currents around air ducts, ventilating / heating systems, and laboratory fume hoods. Each kit contains six smoke tubes (each of which will allow over 100 tests), an aspirator bulb, and a carrying case. Fast and simple to use, the tubes provide a highly visible white smoke. This kit is not suitable for qualitative respirator fit testing.

Ordering Information

Part No.	Description
500	Kit, complete with tubes
501	Smoke tubes, 6 per box



THOMAS FIBERGLASS STORAGE CABINETS & BOXES

Features Include:

- A Patented Seal
- Positive Seal Trim Lock Bulb Gasket
- Optional Easy-View Acrylic Window Provides Verification of Contents
- Solid Brass or Stainless Steel Grab Handles
- Full Length Stainless Steel Hinges, Rivets and Dual Quick Opening Latches
- Custom Self Adhesive Classification Emblems
- Choice of UV-Inhibited High Visibility Colors
- Standard or Custom Designed Interior Shelves

FWG-72



FWG-84



SCB-1



SEC-35



BB-3

Specifications Part No.	Outside Dimensions (inches)			Inside Dimensions (inches)			Shipping
	Height	Width	Depth	Height	Width	Depth	Wt. (lbs)
FWG-72*	73-3/4	35-5/8	27-3/4	71-1/2	33-1/2	27-1/2	180
FWG-64*	65-1/2	62	27-1/2	62-1/4	58-3/4	25-3/4	240
FWG-82**	84-1/4	47	26	82-1/2	46	25-1/2	180
FWG-84**	87	72	29	85	71-1/2	27-1/2	300
SEC-35*	35	18-3/4	11-1/2	32-1/4	16-1/2	10-3/4	29
BB-1****	24-3/4	18-3/4	11-1/4	23	17	10-1/2	17
BB-2****	35	18-3/4	11-1/2	32-1/4	16-1/2	10-3/4	31
BB-3****	49-1/2	15-1/2	14-1/2	47	13-1/4	13-1/4	36
BB-4****	48-3/4	25-1/4	18-3/4	46	22-1/2	17-1/2	60
SCB-1***	48-3/4	25-1/4	18-3/4	46	22-1/2	17-1/2	64
SCB-2***	48-3/4	36-1/2	25-1/4	46	33-1/2	23-3/4	125

Standard Colors: * yellow, **red, ***white, ****blue

GENERAL INDUSTRIAL

Eagle Imager® 160

The heart of the Eagle Imager® 160 is the latest, most advanced vanadium oxide microbolometer technology available, the Firecooled™ microbolometer. Producing images comparable to a video camera, the Eagle Imager® 160 allows firefighters to more quickly and efficiently assess fireground conditions.

Valuable Options

The Eagle Imager® is available with these user-selectable options:

- An on-screen temperature readout in either Fahrenheit or Centigrade to assist firefighters in identifying hot spots and fire extension. The camera's easy-to-read scale displays temperature readings in 100° increments.
- A two-channel transmitter is available to promote greater flexibility and communication in command and control situations. This option, used in conjunction with a receiver kit, enables remote decision-makers to see, and even record, exactly what the firefighter is seeing. This option is ideal for training applications.

Ordering Information

Part No.	Eagle Imager 160 Thermal Camera	2-Channel Transmitter	On-Screen Temp. Readout
200155-101	X		
200155-102	X	X	
200155-103	X		X
200155-104	X	X	X



Standard Accessories

- Spare battery
- Kevlar® neck/shoulder strap
- 110-volt A/C adapter and 12-volt DC power cables
- Charging cradle
- Durable carrying case

Also available with TCS (Truck Charging System)

Eagle X™

Inspired by firefighting professionals, Scott's Eagle X™ incorporates all the must-have features for a thermal imaging camera without the added frills and costly options. Easy to operate and maintain, the Eagle X™ utilizes the same advanced technology featured in the legendary Eagle Imager® 160, into a sleek, compact design. The rugged and lightweight Eagle X™ features a large format 3.5 inch LCD screen that displays finely detailed images for fast, accurate interpretation. And, the exclusive image-on-demand feature with trigger button activation allows quick, simple gloved hand operation while conserving valuable battery life. The Eagle X™reliable, easy-to-use thermal imaging technology in a truly cost effective package.

Ordering Information

Part No.	Eagle X Thermal Camera	Radiometry Temperature Digital Readout - in Fahrenheit (F)
Yellow Housing		
200353-01	X	
200353-03	X	X
Black Housing		
200353-06	X	
200353-08	X	X



Accessories

200241-01 carrying case assembly (includes the following)

- Spare NiMH battery
- Charger cradle & AC adapter
- DC adapter
- AA battery loader
- Neck/shoulder strap