



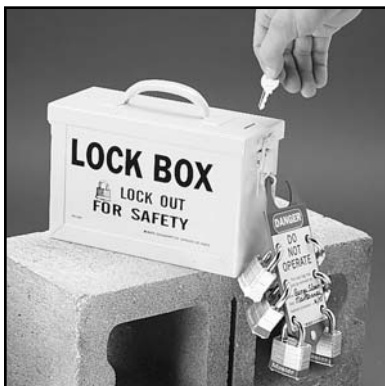
## Brady® 13 Lock Lock Box

Up to 13 individual locks can be applied to the outside of this lock box. Heavy steel construction. Size: 10" x 4" x 6".

### Ordering Information

Part No.	Description
65699*	13 lock group lock box, color red
45190	15 lock group lock box, color blue

\*Also available in Spanish



## Brady® Group Lock Box

For complex work team lockout situations. After machine or process is locked out, all keys are placed in lock box. Group leaders place lock on lock box until job is

complete and all group members are cleared from work area. Heavy steel construction. Size: 10" x 4" x 6".

### Ordering Information

Part No.	Description
65872	Group lock box, color yellow

## Circular 7-Position Lockout Device

Prevents activation of equipment until all padlocks (not included) have been removed. Made of nickel-plated steel.



### Ordering Information

Part No.	Description
15072-00	Seven hole circular lockout, size: 3-1/8" W x 3" H

## ED-CO Lockouts

ED-CO lockouts are made to hold, made to last! Bright, zinc plated, steel hasp with interlocking tabs, an exclusive ED-CO feature, helps keep the lockout from being removed improperly. Red vinyl coating serves as a warning tag.

### Ordering Information

Part No.	Description
ED-610	Lockout with 1-1/2" hasp



## Brady® Do Not Operate Tags

Ordering Information: Std. Pkg: 25/Pkg

Part No.	Description
65367	Heavy duty vinyl tag, 5-3/4" x 3", tie wrap ties included

**Call Us For All Your Lockout and Accident Prevention Tags**



**DO NOT OPERATE**

SIGNED BY \_\_\_\_\_  
DATE \_\_\_\_\_  
PHONE \_\_\_\_\_

BRIDGEMARK® DIV. CAT. NO. 86458

Front



**DO NOT REMOVE THIS TAG**  
Remarks \_\_\_\_\_  
\_\_\_\_\_  
\_\_\_\_\_  
\_\_\_\_\_  
\_\_\_\_\_

SEE OTHER SIDE

Back

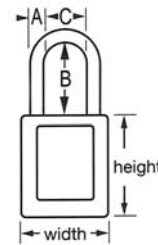
## Lightweight Safety Lockout

### Designed Exclusively for Lockout/Tagout.

- Designed by Safety Directors specifically for OSHA lockout compliance
- Durable, lightweight, non-conductive Xenoy® lock body
- Customize on-site with permanent, write-on labels
- Compliance with OSHA “one employee, one lock, one key” directive
- High security, reserved-for-safety cylinder - up to 100,000 key changes
- Key retaining - ensures that padlocks are not left unlocked
- Photo I.D. labels, laser engraving and key charting services available



Part No.	Description	Vertical Shackle Clearance (B)
1-1/2" Wide, 1-3/4" Tall Xenoy® Body. Shackle Dimensions: A: 1/4" C: 25/32"		
410RED	Keyed Different	1-1/2"
410LTRED	Keyed Different, Extra Length Shackle	3"
410KARED	Keyed Alike	1-1/2"
410KALTRED	Keyed Alike, Extra Length Shackle	3"
410MKRED	Master Keyed	1-1/2"
410KAMKRED	Keyed Alike, Master Keyed	
Eight Color Options: Add Desired Color Suffix: RED, ORJ, YLW, GRN, BLU, BLK, PRP, TEAL		



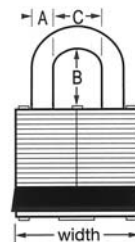
## Steel Body Padlocks

### Traditional and Durable Lockout Series.

- Reinforced laminated steel construction
- Ideal when locks may be subjected to physical abuse
- Six available bumper colors for segmentation by department, etc.
- Complete range of 4-pin tumbler cylinder (1,400 key changes) is available



Part No.	Description	Vertical Shackle Clearance (B)
1-9/16" Wide Laminated Steel Body. Shackle Dimensions: A: 9/32" C: 5/8"		
3RED	Keyed Different	3/4"
3LFRED	Keyed Different, Extra Length Shackle	1-1/2"
3LHRED	Keyed Different, Extra Length Shackle	2"
3KARED	Keyed Alike	3/4"
3KALFRED	Keyed Alike, Extra Length Shackle	1-1/2"
3KALHRED	Keyed Alike, Extra Length Shackle	2"
3MKRED	Master Keyed	3/4"
3KAMKRED	Keyed Alike, Master Keyed	
Six Color Options: Add Desired Color Suffix: RED, YLW, GRN, BLU, BLK, WHT		



## American Aluminum Padlocks

Color coded, heavy duty aluminum alloy construction with anodized finish. Chrome plated hardened steel shackle, five pin brass tumbler. Standard lock is keyed alike (KA) and are in standard packages of 6 locks with 4 brass keys. Master keyed locks are also available. Colors: Blue (BL), green (GR), purple (U), Gold (GD), black (BK), red (RD), Orange (OR), clear (P) and duranodic brown (BR).

### Ordering Information

#### Part No. Description

1105-KA- Padlock, shackle clearance 1", specify color (sold in sets of 6 locks)



## Ball Valve Lockout Devices Best Available Method For Locking Out Ball Valves



- Patented design fits all major brand ball valves.
- Two new models accept 3/8" shackle padlocks.
- Simple one piece design makes it easy to use.
- Complies with OSHA's lockout standard.

### No. 65668

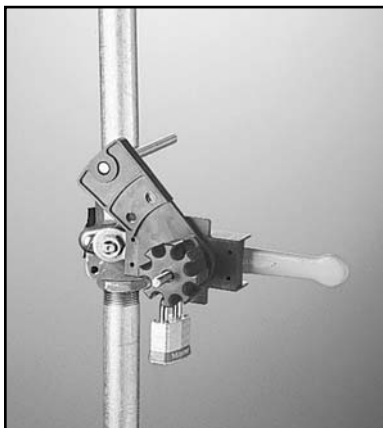
#### Chain Attachment

Keep lockout device near valves that are locked out frequently.  
Standard package: 5 chain attachment assemblies.

Brady Ball Valve Lockout Devices come in two sizes to lock out 1/4" to 1" and 1-1/4" to 3" ball valves.

### Ball Valve Lockout Devices

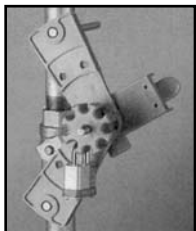
Part No.	Valve Size	Padlock Shackle	Min. Padlock	Material
		Max. Diameter	Shackle Clearance	
65666	1/4" - 1"	9/32"	1"	Super Tough Nylon
65692	1/4" - 1"	3/8"	3/4"	Heavy Steel
65669	1-1/4" - 3"	9/32"	3/4"	Heavy Steel
65693	1-1/4" - 3"	3/8"	3/4"	Heavy Steel



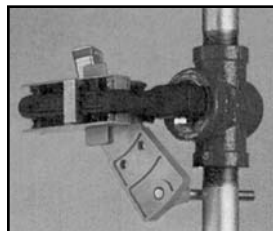
Various shaped ball valve handles, as well as Block, Stop, Butterfly and T-Handle valves.

### Universal Ball Valve Lockout Device

The Universal Ball Valve Lockout device is designed to "lock out" virtually any quarter turn valve — round, square or flat; and with odd shaped handles, straight or with angles. Plus, it's versatile enough to accommodate handles up to 1-1/4" thick and 1-5/8" wide in almost any length. Its unique design even allows it to work with valves on insulated pipes. For process safety control requirements (non-lockout applications) the Universal Ball Valve Lockout device can lock valves in the on and throttled positions. This device will accommodate a second lockout arm (purchased separately to lock handles in throttled position and to lock out 3, 4 and 5 way valves. This device is made of durable super-tough nylon and steel materials which is strong, lightweight and resistant to most chemicals.

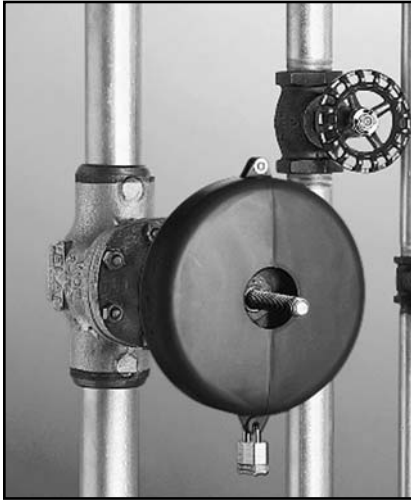


Use second rotating arm to lock valve in the throttled position.



If needed, device can be turned upside-down to lock out valve.

Part No.	Description	Thickness	Width
65400	Small UBVL	3/4"	1"
65401	Large UBVL	1-1/4"	1-5/8"
65402	Small Arm Adapter	3/4"	1"
65403	Large Arm Adapter	1-1/4"	1-5/8"



*Unique knockout feature can be removed by hand to accommodate OS&Y or "rising stem" gate valves.*

Make locking out valves safe and easy with the new Brady Gate Valve Lockouts. Available in four sizes to fit valve handles from 1" to 13" in diameter. Made of durable, non-adherent plastic to resist chemicals and hot and cold temperatures.

- New stainless steel hinge design for added strength and security.
- Now available in red, blue, green, and yellow for added versatility.
- Unique knockout feature accommodates OS&Y or "rising stem" gate valves.
- Designed to accept all locks with up to 3/8" shackle diameter and 3/4" or greater vertical shackle clearance.

## Gate Valve Lockouts

### Valve Handle Part No.

Diameter	Red	Yellow	Green	Blue
1" - 2 1/2"	65560	65590	65595	65585
2-1/2" - 5"	65561	65591	65596	65586
5" - 6-1/2"	65562	65592	65597	65587
6-1/2" - 10"	65563	65593	65598	65588
10" - 13"	65564	65594	65599	65589

## No. 64057

### Adjustable Gate Valve Lockout

- This versatile lockout adjusts to fit 1" to 6 1/2" valve handles.
- Resistant to extreme temperature changes from -50°F (-45°C) to 360°F (182°C).



## Cable Lockout Device

Brady introduces a brand new way to lockout large gate valves. Because it's a cable lockout, one size fits all. Plus, it's easy to carry and easy to use. Flexible cable will lockout ALL sizes of gate valves and can even be used to lockout multiple valves... all with one device. Better than chains and just as effective, but a lot less weight. Great for security use too. A cost effective, new way to lockout gate valves with many other uses as well.

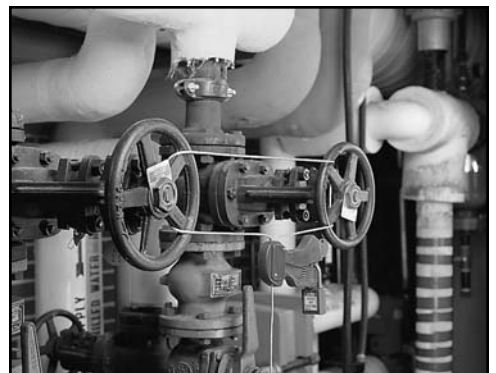
### Part No. Description

65318 Cable Lockout Device with 6 ft. cable

### Additional Cables

65319 8 ft. Cable

65320 10 ft. Cable





## Brady Plug Lockout

Designed for heavy duty applications, Brady's Plug Lockout is an inexpensive way to safely lock out electrical plugs. Made of rugged polypropylene, the lockouts are available in two sizes: one to fit standard 110 volt grounded plugs and a larger size for 220 and 550 volt plugs.

The Plug Lockout is ideal for those situations where the plug is not under the exclusive control of the person doing the service or performing the maintenance. If the maintenance employee temporarily leaves the area, it prevents anyone else from putting the plug back into its outlet. It's a simple, cost effective safety measure.

### Part No. Description

65674	110 volt device: 2" x 2" x 3-1/2", 1/2" hole
65675	220/550 volt devices: 3-1/4" x 3-1/4" x 7", 1" hole



## Wall Switch Lockout

Easy to install device can be used with most wall mounted switches. Can be used to lock switch in either on or off position. Install using existing screws.

### Part No.

65392	Package of 1
65696	Package of 6

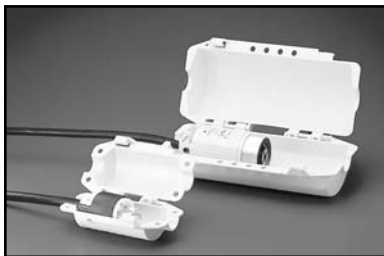


## Stoppower™

Ideal for the office and frequently locked out cords. Stoppower™ slides over cord prongs and locks. Cord cannot be plugged in with Stoppower™ in place. Stoppower™ cannot be removed without a key.

### Part No. Description

65673	Red: 1 device/pkg.
65640	Yellow/Red/Green: 3 devices/pkg.



## Hubbell Plugout™

Two sizes to fit most heavy industrial plug applications. Small version accepts plugs with maximum 2-3/4" diameter and 4-3/4" length with 1" cord. Large version accepts plugs with maximum 4-1/2" diameter and 10.15" length and 1.45" cord.

**Standard package:** 1 device

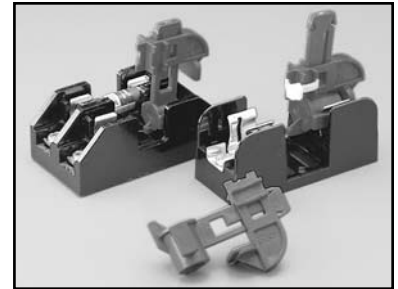
### Part No. Description

65695	Small Plugout™
65968	Large Plugout™

## Fuse Lockout Devices

Unique locking mechanism prevents Fuse Lockout from being accidentally removed from fuse block. Available in two sizes for most commonly used fuses.

Part No.	Size	Qty.
65750	13/32"	6/Pkg.
65751	9/16"	6/Pkg.



## Fuse Blockout Devices

Block out 1/4" to 1-1/16" and blade type fuses. Use these highly visible devices in conjunction with Brady Lockout Tags to comply with OSHA's Lockout/Tagout Standard.

Part No.	Description	Qty.
65690	1/4", 9/32", 13/32" and 9/16" fuses	6/Pkg.
65691	13/16", 1-1/16" and blade type fuses	6/Pkg.



## Fuse Pullers

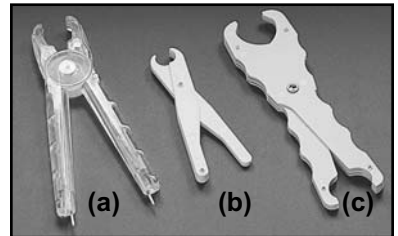
### (a) Fuse Puller with Testlite

This handy pocket-sized tool provides maximum safety when pulling cartridge fuses or checking electrical connections. One end is a fuse puller, the opposite end has test prods that fit both parallel and tandem slot receptacles. Use on fuses up to 100A, 250V, and 60A, 600V. Tool is 8" long.

### (b)(c) Safe-T-Grip® Fuse Pullers

This tool provides maximum efficiency and convenience when removing or replacing cartridge fuses.

- Notched handles for a no-slip grip.
- Clearly marked amperage ranges.
- Exceed MIL specifications



Part No.	Size
65281(a)	8" long
65279(b)	For 9/32" - 1/2" diameter fuses: 5" long
65280(c)	For O-100A, 250V & 600V: 7-1/2" long

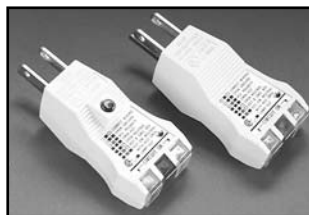
## Test Circuit Breakers, Outlets & Switches for Safety



### AC Sensor

This AC Sensor has been selected by the OSHA Electrical Technical Equipment Committee as the only instrument of its type for use by OSHA compliance officers to identify and cite electrical hazards of 50 volts or more.

**Part No: 652269**



### E-Z Check® Plus GFI Circuit Tester

The E-Z Check® Plus GFI Circuit Tester checks for the following conditions: correct wiring, open ground, reverse polarity, open hot, open neutral, hot on neutral, hot and ground reversed with open hot, and ground fault interruption. (Not available in Canada).

**Part No: 65273**



### Powr-Glo™ Pocket Tester

The Powr-Glo™ Pocket Tester checks voltage from 70 to 440 AC without contact on electrical lines. Unique sensor locates breaks along live, insulated wires and power cords, checks for energized AC circuits, distinguishes polarity and detects leaks in ungrounded devices. Powered by 1.5v alkaline batteries.

**Part No: 65271**



Covering a breaker with a piece of duct tape to "lock it out" isn't safe or effective and certainly doesn't satisfy OSHA. A Brady Lockout Device gives you a new level of safety and compliance.

## "No Hole" Circuit Breaker Lockout

"No Hole" Circuit Breaker Lockout device will lock out most single pole circuit breakers. Enhanced to lock out most Federal Pacific breakers. Easy to install, provides secure locking protection. Accepts up to 9/32" shackle diameter lock. Fits wider and thicker switch tongues: 277-.65" wide by .46" thick, 480/600 1-5/8" wide by .55" thick.

Part No.	Description	Qty.
65965	277 Volt Device	6/Pkg.
65966	480/600 Volt Device	6/Pkg.

## Single Pole Circuit Breaker Lockout

Device locks out most major brand breaker switches. (Except Federal Pacific and most 277 volt breakers.) Simple design snaps onto breaker switch and accepts up to 9/32" shackle diameter lock or nylon tie.

Part No.	Qty.
65688	6/Pkg.



## Oversized Breaker Lockout Device

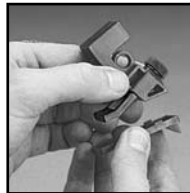
New oversized 480/600 volt frame lockout fits breakers up to 2-1/2" wide by 7/8" thick.

Part No.	Qty.
65321	6/Pkg.

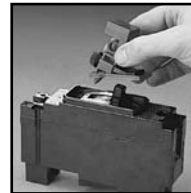
## Lockout Cleats

Used with the 277 and 480/600 volt "No Hole" (65965 and 65966) breaker lockouts. Assure positive lockout for those hard to lock out long sliding switch throws and switches with large angular rotation commonly found with some Westinghouse, ITE, Square D and Federal Pacific circuit breakers. Snap-on and off feature allows for use only when needed.

Part No.	Description	Qty.
65404	277 Volt/General Use	6/Pkg.
65406	480/660 Volt/General Use	6/Pkg.



Step 1



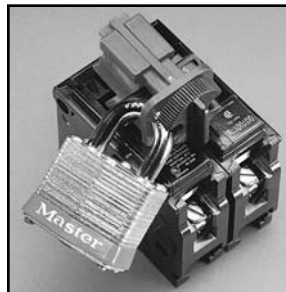
Step 2



Step 3

## Universal Multi-Pole Breaker Lockout

One Multi-Pole lockout which works with most major multi-pole breakers with tie-bar. Very convenient because no self-locking tie is needed. Applicability includes: GE, ITE, Sylvania, Challenger, Bryant, Westinghouse and General Switch Co.



Part No.	Qty.
66320	6/Pkg.

Universal Multi-Pole lockout works with most two or three pole breakers utilizing a tie-bar.

Note: Kits Also Available in Spanish.



## Lockout Tool Box With Components

A crucial part of any Lockout/Tagout program is to prevent worker injury by cutting the power on a piece of equipment that is being serviced. The Lockout Tool Box has what you need to lock and mark your equipment preventing its use until repairs have been completed.

**Part No:** 65289

**Kit contains:** 1 - Plastic Lockout Tool Box with Tray (65290); 1 - 1" to 2.5" Gate Valve Lockout (65560); 1 - Small Ball Valve Lockout (65666); 1 - 3/4" Blue Padlock (65536); 1 - 2" Blue Padlock (65542); 1 - Labeled Lockout Hasp (65960); 5 - Lockout Tags (65525); 1 - Universal Multi-Pole Lockout (66321); 1 - 277 Volt "No Hole" Lockout (65396); 1 - 480/600 Volt "No Hole" Lockout (65397); 1 - Wall Switch Lockout (65392); 1 - Small Brady Plug Lockout (65674)

## Combination Lockout Starter Kit

Protect your employees and comply with OSHA standards with the Combination Lockout Starter Kit. Whether you want to secure breakers, wall switches, plugs or gate and ball valves, this kit has the lockout devices to get you started.

**Part No:** 65779

**Kit contains:** 6 - Single Pole Breaker Lockouts (65688); 6 - 227 Volt "No Hole" Breaker Lockouts (65965); 6 - Universal Multi-Pole Breaker Lockouts (66320); 6 - Wall Switch Lockouts (65696); 1 - Small Brady Plug Lockout (64674); 1 - Large Brady Plug Lockout (65675); 2 - 1" to 2.5" Gate Valve Lockouts (65560); 2 - 2.5" to 5" Gate Valve Lockouts (65561); 2 - Small Ball Valve Lockouts (65666); 2 - Large Ball Valve Lockouts (65669); 5 - Red Labeled Lockout Hasps (65960); 6 - 3/4" Blue Padlocks (65536); 6 - 2" Blue Padlocks (65534); 25 - Lockout Tags (65525); 2 - Yellow Canvas Locking Carrying Bags (65780)

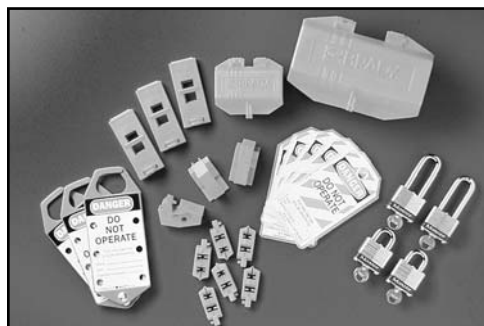


## Electrical Lockout Starter Kit

Now protect your employees from electrical hazards with the Lockout Starter Kit. This kit allows you to mark and secure a variety of components. Contents listed below.

**Part No:** 65777

**Kit contains:** 6 - Single Pole Breaker Lockouts (65688); 6 - 227 Volt "No Hole" Breaker Lockouts (65965); 6 - Universal Multi-Pole Breaker Lockouts (66320); 6 - Wall Switch Lockouts (65696); 1 - Large Brady Plug Lockout (65675); 1 - Small Brady Plug Lockout (65674); 3 - Red Labeled Lockout Hasps (65960); 2 - 3/4" Blue Padlocks (65536); 2 - 2" Blue Padlocks (65542); 10 - Lockout Tags (65525); 1 - Yellow Canvas Locking Carrying Bag (65780)

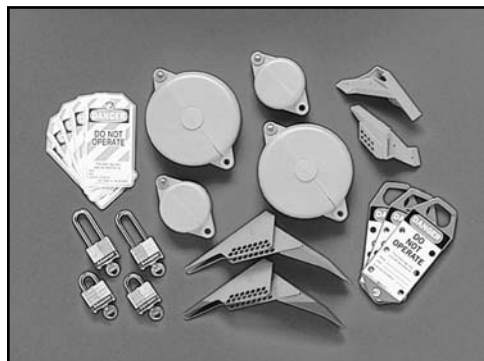


## Valve Lockout Starter Kit

The perfect way to secure pipe valves is with the Brady Valve Lockout Starter Kit. The kit gives you an assortment of gate valve lockouts, small and large ball valve lockouts, padlocks, hasps, and lockout tags.

**Part No:** 65778

**Kit contains:** 2 - 1" to 2.5" Gate Valve Lockouts (65560); 2 - 2.5" to 5" Gate Valve Lockouts (65561); 2 - Small Ball Valve Lockouts (65666); 2 - Large Ball Valve Lockouts (65669); 3 - Red Labeled Lockout Hasps (65960); 2 - 3/4" Blue Padlocks (65536); 2 - 2" Blue Padlocks (65542); 10 - Lockout Tags (65525); 1 - Yellow Canvas Locking Carrying Bag (65780)



**CALL**  
800.833.0247  
281.479.9700

**FAX**  
800.282.4365  
281.479.6321

**CALL US TODAY**

[www.safetyfire.com](http://www.safetyfire.com)