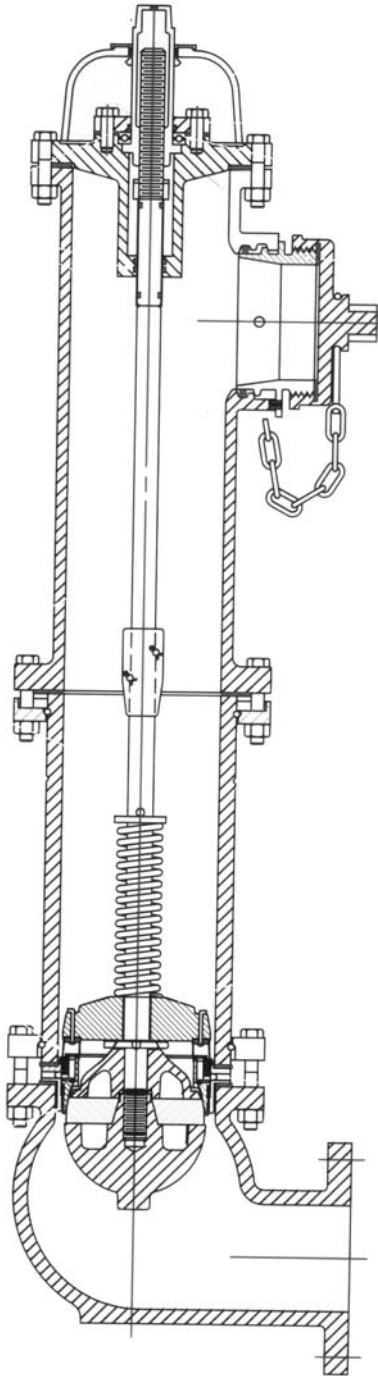


# AMERICAN FLOW B84B-BB HYDRANT



The American Flow Control 6" B84B-BB compression type fire hydrant opens against the pressure and closes with the pressure. The operating mechanism at the top of the hydrant is subject to upward thrust, which is applied against a thrust washer located at the top of the operating nut collar. The use of this thrust washer reduces the required operating torque.

In opening, turning the operating nut lowers the hydrant rod and forces the hydrant valve away from its seat. The hydrant valve is unseated slightly before the drains are closed, making it possible to effectively flush the drain ports.

The drains close after approximately 1-1/2 turns of the operating nut and are securely held in their closed position by the spring on the hydrant rod. When the hydrant valve is closed, the drain lever is held away from drain ports for positive drainage through drain ports.

The use of O-ring seals provides a dry-top hydrant and eliminates friction normally found where conventional packing is used against the operating nut.

### B84B-BB UL/FM - (Rated at 250 psi water working pressure)

6" Main Valve Opening. Non-Traffic Model. Two Hose Nozzles With One Pumper Nozzle. 6" 125# Flange Base or 6" MJ Base (less Acc.)

#### SPECIAL HYDRANT CONFIGURATIONS\*

Two Way @ 90° (No Pumper)

Double Pumper with 2 Hose Nozzles

Two Flanged Outlets (For OSCO Valve) With One Pumper Nozzle

Two Hose Nozzles, 1 Pumper, & 1-3" 125# Flange Monitor Outlet (Less Elbow)

4" MJ Base with Acc.

6" MJ Base with Acc.

8" Flange or MJ Base less Acc.

8" MJ Base with Acc.

12" Long x 6" 125# Flange Straight Adapter Base

6" Tyton Base

#### OPTIONAL ACCESSORIES

2-1/2" Outside Independent Cut-Off Valves, #20-2 Flange Style, with Cap & Chain

3" 125# Monitor Elbow

12" Dia. Handwheel for NS Nut only (with Stud, Nut, Washer)

Monitor Spool Piece with 3" or 4" Flange (125# or 250# drilling)

Ball Bearing Retrofit

Hydrant Operating Wrench

Hydrant Seat Wrench

**\* Check with Dooley Tackaberry for Availability of Patterns for Special Hydrant Configurations**

Note: Monitor elbow also available for use with B84B-BB hydrant. Specify 3" or 4" 150# flange for monitor mount.

*When Ordering Specify Depth of Trench*

# AMERICAN FLOW CONTROL TRENCH ADAPTER

## Features

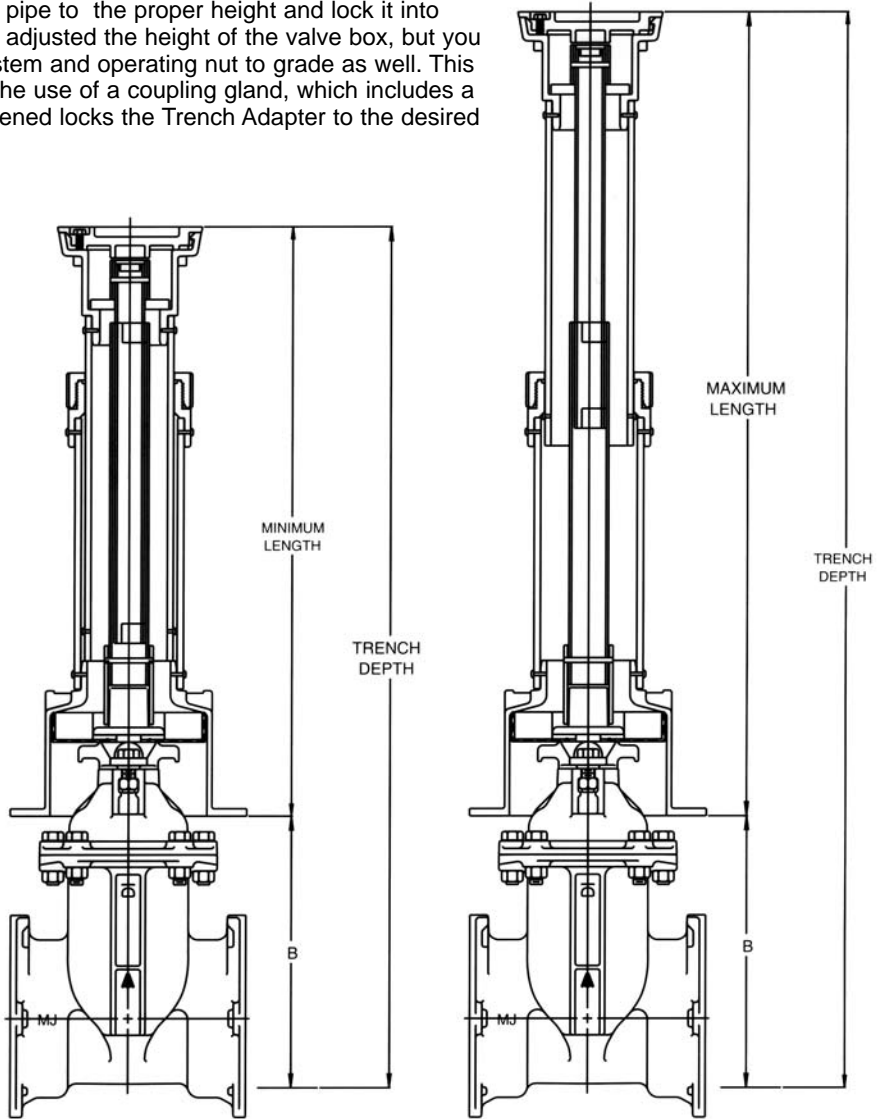
American Flow Control's Trench Adapter is a fully adjustable valve box and extension stem system available in trench depths ranging from 3 feet to 13 feet. Both the valve box and the extension stem adjust to grade in a matter of seconds, completely eliminating the need to cut extension stems in the field. You simply raise the upper pipe to the proper height and lock it into position. Now you have not only adjusted the height of the valve box, but you have also raised the extension stem and operating nut to grade as well. This adjustment is accomplished by the use of a coupling gland, which includes a split O-ring that when hand tightened locks the Trench Adapter to the desired trenched depth.

**Table 1**

Valve Size	Dimension "B" (inches)
4"	9.25
6"	13.50
8"	18.25
10"	23.00
12"	27.50
14"	36.50
16"	41.00

**Table 2**

Part No.	Length (inches)	
	Min.	Max.
TA-1	18.25	20.25
TA-2	22.25	28.25
TA-3	24.75	32.50
TA-4	29.75	40.50
TA-5	37.75	56.50
TA-6	49.75	80.50
TA-7	73.75	128.50



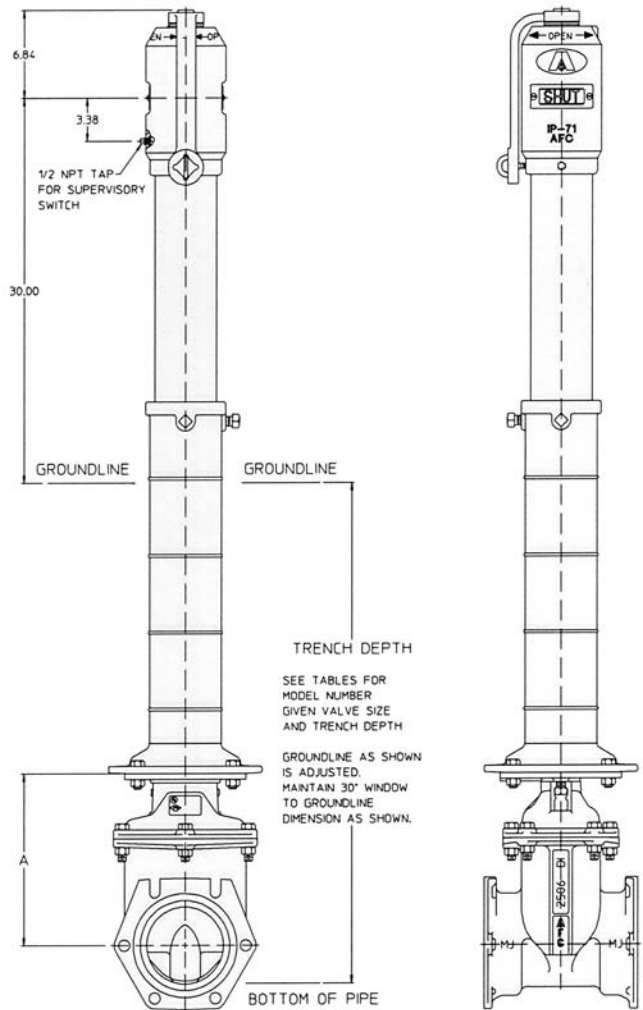
Valve 16 Size	Trench Depth and Model Number																					
	3'0"	3'6"	4'0"	4'6"	5'0"	5'6"	6'0"	6'6"	7'0"	7'6"	8'0"	8'6"	9'0"	9'6"	10'0"	10'6"	11'0"	11'6"	12'0"	12'6"	13'0"	
4"	3	4	4,5	5	5,6	6	6	6	6	7	7	7	7	7	7	7	7	7	-	-	-	-
6"	2	3	4	5,4	5	6	6	6	6	6	7	7	7	7	7	7	7	7	7	-	-	-
8"	-	2	3,4	4	5	6	6	6	6	6	6	7	7	7	7	7	7	7	7	7	-	-
10"	-	1	2	3,4	4	5	5	6	6	6	6	7	7	7	7	7	7	7	7	7	7	-
12"	-	-	1	3	4,3	5	4	5	6	6	6	6	7	7	7	7	7	7	7	7	7	7
14"	-	-	-	-	-	4	4	5	5	5	6	6	6	6	7	7	7	7	7	7	7	7
16"	-	-	-	-	-	3,4	3,4	4	5	5	6	6	6	6	7	7	7	7	7	7	7	7

# AMERICAN FLOW IP-71 INDICATOR POSTS

American Flow Control has available a full line of "open-shut" indicators approved by Factory Mutual and listed by Underwriters' Laboratories for use with gate valves 2" through 16". All are set at the factory for the specific trench application. They may be used with valves of other manufacture as well as American-Darling valves. Modified posts for high pressures or larger size valves are available upon special order.

All working parts are interchangeable on all three styles of indicator posts, including the entire operating head. The top of the operating nut is stamped with the size range of valves it will accommodate (namely 2-3, 4-8, 10-16). Change in direction of opening is effected by reversing target plates. Optional handwheels are available instead of L-shaped standard wrench. Locking of indicator and valve is accomplished with padlock (wrench operation) or padlock and chain (handwheel operation), both to be supplied by customer.

If necessary, field reduction of trench depth on post indicators can be accomplished by cutting off equal amounts from bottom of 4" pipe barrel and top of 1" square stem. Increase of trench depth is best accomplished by ordering a new pipe barrel and extension rod giving valve size and desired final trench depth.



### Directions for Ordering

1. Quantity
2. Style
3. Size of Valve
4. Director of Valve Opening
5. Trench depth (distance from ground line to invert of pipe)

## AFC Series 2500 Ductile Iron UL/FM Resilient Wedge Valves 250 PSI Water Working Pressure

Not since the butterfly valve was introduced has a product had as much impact on the water works industry as the resilient seated gate valve. Now we have taken a great product and made it even better through the process of valve engineering. The American Flow Control™ Series 2500 Ductile Iron Gate Valve incorporates the proven features of our cast iron valves and adds all the advantages inherent in ductile iron

construction — greater strength, higher pressure rating, increased safety factor, greater durability and lighter weight. The Series 2500 Ductile Iron Gate Valve is easier to work with during construction due to its lighter weight. Yet it possesses far greater strength than cast iron valves to resist abuse both during installation and in service.

### The Series 2500 Ductile Iron Resilient Wedge Gate Valve Has These Standard Features:

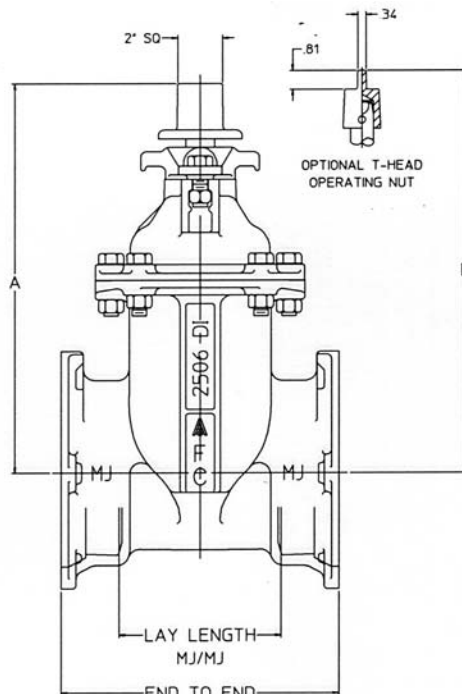
- Fusion Bonded Epoxy Coating complies with ANSI/ AWWA C550
- Flanged Valves are furnished with 125 lb. Flat Flanges, 125 lb. and 250 lb. Raised Face Flanges are available
- Ductile Iron Body, Bonnet and Wedge
- 250 p.s.i. Water Working Pressure
- Rubber Encapsulated Wedge
- Triple O-ring Stem Seals
- Smooth (No Pocket) Waterway
- 100% Bottle Tight Closure
- Available with: 304 S. S. Bolting or 316 S. S. Bolting

#### Sizes Available In:

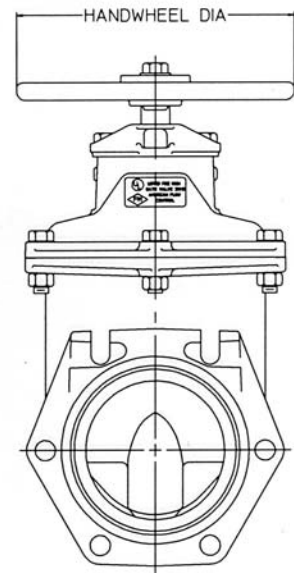
**Non-Rising:** 4", 6", 8", 10", 12", 14", 16"

**Stem (NRS):** 18", 20", 24"

**Outside Screw and Yoke (OS&Y):** 4", 6", 8", 10", 12"



SHOWN WITH OPERATING NUTS



SHOWN WITH OPTIONAL HANDWHEEL

#### UL Listed And FM Approved Sizes Available\*\*

4"    6"    8"    10"    12"    14"    16"

#### Non UL Listed And FM Approved Sizes Available

18"    20"    24"

Note: 14" – 24" Flanged Valves can be Furnished with Handwheels  
AFC recommends the use of bevel or spur gears on 18" – 24" Valves

\*NRS Type Available with Indicator Post Mounting Plate

\*\*Handwheel operated valves are not U.L. listed or FM approved.

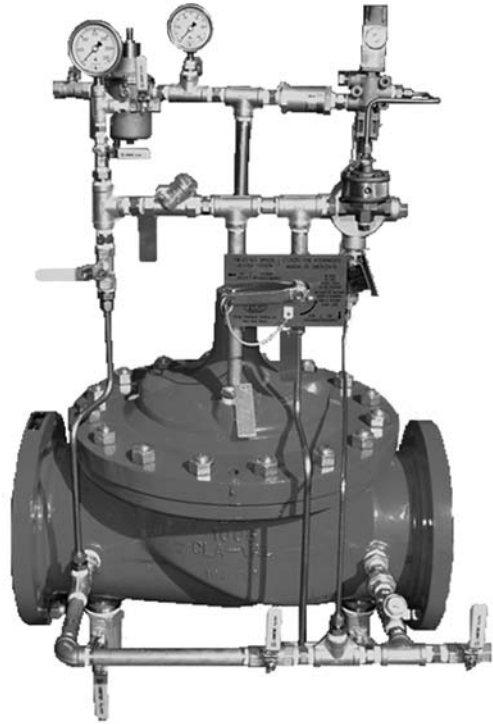
**(Valve shown is 14" with flat flanged ends, and "NSR" non-rising stem)**

# CLA-VAL® MODEL 100G/2100G DELUGE VALVES

- U.L. Listed/C.U.L. Listed
- Model 100G Globe Design
- Model 2100G Angle Design
- Proven Reliable Design

The Cla-Val® Co. Model 100G/2100G Deluge Valve is designed for use in controlling waterflow to Deluge, Pre-Action, or Foam-Water type fire protection systems. This valve is U.L. Listed in "Special Systems Water Control Valves Class I (VLFT)".

The Model 100G/2100G is a hydraulically-operated, diaphragm-actuated, globe or angle pattern Deluge Valve. It consists of three major components: the Body, the Cover, and the Diaphragm Assembly. The only moving part is the Diaphragm Assembly. Packless construction and simplicity of design assures long service life and dependable low maintenance for this valve. All ferrous parts are fusion epoxy coated internally and externally for added corrosion resistance, along with a Delrin Sleeve Stem and Teflon Coated removable seat.



## Specifications

<b>Sizes</b>	Globe: 3" – 10" Angle: 3" – 10"
<b>End Details</b>	Ductile Iron 125 ANSI B16.1 flanged Cast Steel 140 ANSI B16.5 flanged
<b>Pressure Rating</b>	150 class, 175 psi maximum (Ductile Iron) 150 class, 285 psi maximum (Cast Steel) 300 class, 400 psi maximum
<b>Temp. Range</b>	Water, to 180°F MAX.
<b>Materials</b>	Main Valve Body and Cover: Ductile Iron ASTM A-536* UL, ULC Cast Steel ASTM A216-WCB* UL, ULC Nickel Aluminum Bronze ASTM B148 UL, ULC Super Duplex Stainless Steel UNS31254 UL, ULC Stainless Steel ASTM A743-CF-8M UL, ULC Main Valve Internal Trim: Bronze ASTM B61 Stainless Steel Type 303 Monel QQ-N-281 Class B Diaphragm and Disc: Buna-N® synthetic rubber *Internally and Externally Epoxy Coated

## Friction Loss

For use in hydraulically calculated systems, friction loss equivalent to:

### 100G (Globe)

3" Size = 42 Ft. of 3" Pipe
4" Size = 92 Ft. of 4" Pipe
6" Size = 116 Ft. of 6" Pipe
8" Size = 123 Ft. of 8" Pipe
10" Size = 201 Ft. of 10" Pipe

### 2100G (Angle):

3" Size = 33 Ft. of 3" Pipe
4" Size = 44 Ft. of 4" Pipe
6" Size = 79 Ft. of 6" Pipe
8" Size = 105 Ft. of 8" Pipe
10" Size = 153 Ft. of 10" Pipe

## When Ordering, Please Specify

1. Catalog No. 100G or 2100 G
2. Size
3. Body and Cover Material
4. Globe or Angle Pattern
5. Pressure Class
6. Internal Trim Material

**Call Our Project Group or Estimating Team  
for a Quotation**

**Each Valve is Trimmed  
in Accordance with Your Specification**

# DARLEY CHAMPION 18HP PORTABLE PUMPS

The dependable Darley Champion 1-1/2 AGE, 2BE and HE pumps are now available on the quicker starting, quieter running Briggs & Stratton Vanguard Series Engines. These models offer a number of advanced features not available on the standard 11 HP or 18HP I/C units.

Each Darley/Vanguard pump is equipped with a state-of-the-art overhead valve design which allows the engine to run cooler resulting in better oil and fuel economy, reduced carbon buildup and longer valve life.

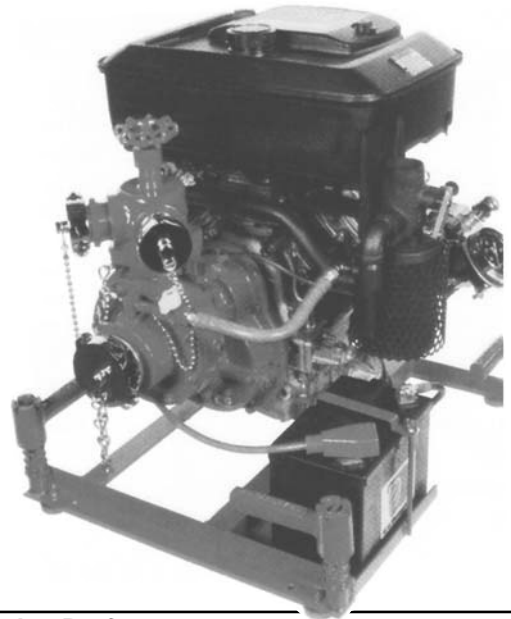
Other standard features include an exhaust primer (standard or drop-in style), 7.2 quart attached fuel tank, electric start with recoil rope backup, modulated flywheel designed to reduce noise and a positive pressure lube system.

## Engine Specifications:

<b>Make</b>	Briggs & Stratton Vanguard 18HP
<b>Type</b>	OHV, air cooled, 4-cycle, V-Twin cylinder, vertical shaft
<b>Displacement</b>	34.75 cu. in.
<b>Bore / Stroke</b>	2.83" x 23.75"
<b>Air Cleaner</b>	Dual element
<b>Ignition</b>	Electric start "Magnetron" with recoil rope back-up
<b>Carburetor</b>	Float, fixed main jet
<b>Governor</b>	Mechanical
<b>Bearings</b>	Ball Bearing - PTO side replaceable sleeve - Mag Side
<b>Cylinder</b>	Aluminum, cast iron sleeve bore 90 degree V-Design
<b>Lubrication</b>	Full pressure with spin-on oil filter
<b>Noise Suppression Package</b>	Standard
<b>Warranty</b>	2 year engine, Lifetime ignition

## Pump Features:

<b>Pump Casings</b>	High strength aluminum alloy
<b>Impeller</b>	Made of bronze alloy balanced and splined to pump shaft for precision fit and durability
<b>Pump Shaft</b>	Precision ground stainless steel with titanium dioxide hardcoating under packing glands. Shaft is splined for broached impeller hubs
<b>Bearings</b>	Deep groove radial type, oversized for long life
<b>Shaft Seal</b>	Easy maintenance of the exclusive Darley Injection
<b>Primer</b>	Combination muffler and exhaust primer
<b>Accessories</b>	Base with carrying handles - 7.2 quart attached fuel tank
<b>Options</b>	Control panel, adapters and caps, spark arrest muffler battery kit and hand primer



Vanguard Series Performance		
1-1/2 AGE 18V	2BE 18V	HE 18V
120 gpm @ 130 psi	375 gpm @ 25 psi	520 gpm @ 15 psi
100 gpm @ 170 psi	300 gpm @ 45 psi	300 gpm @ 55 psi
50 gpm @ 250 psi	150 gpm @ 115 psi	100 gpm @ 70 psi
20 gpm @ 270 psi	100 gpm @ 140 psi	

### 1-1/2 AGE 18V:

<b>Dimensions</b>	26.8" L x 20.9" W x 24.8" H
<b>Weight</b>	145 lbs.
<b>Suction</b>	One 2" NPTF inlet
<b>Discharge</b>	Two 1-1/2" NPTF

### 2BE 18V:

<b>Dimensions</b>	26.8" L x 20.9" W x 24.8" H
<b>Weight</b>	190 lbs.
<b>Suction</b>	One 3" NPTF inlet
<b>Discharge</b>	Two 1-1/2" NPTF and One 2-1/2" NPTF

### HE 18V:

<b>Dimensions</b>	26.8" L x 20.9" W x 24.8" H
<b>Weight</b>	215 lbs.
<b>Suction</b>	One 4" NSTM inlet
<b>Discharge</b>	Two 1-1/2" NPTM and One 2-1/2" NPTM

**CALL**  
800.833.0247  
281.479.9700

**FAX**  
800.282.4365  
281.479.6321

**CALL US TODAY**